

FEATURES:

- INDUSTRY STANDARD MOUNTING PATTERN
- OUTPUT SPEEDS FROM 2-40 RPM
- OUTPUT TORQUE UP TO 200 IN-LB
- 12 OR 24 VOLTS DC
- DIE CAST ZINC CASE
- OP SHAFT ϕ .38 TO ϕ .50
- CUSTOMER SPEC'D FLATS, KEYWAYS, HOLES, ETC

MOTOR SIZE "X"	ϕ 1.41 (36 MM)	ϕ 1.58 (40 MM)
OVERALL SIZE "Y"	3.49	3.98

TOLERANCES

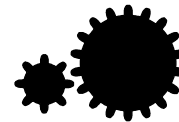
X.XX : \pm .010

X.XXX : \pm .005

FRACTION: \pm 1/64

ANGLE: \pm 2°

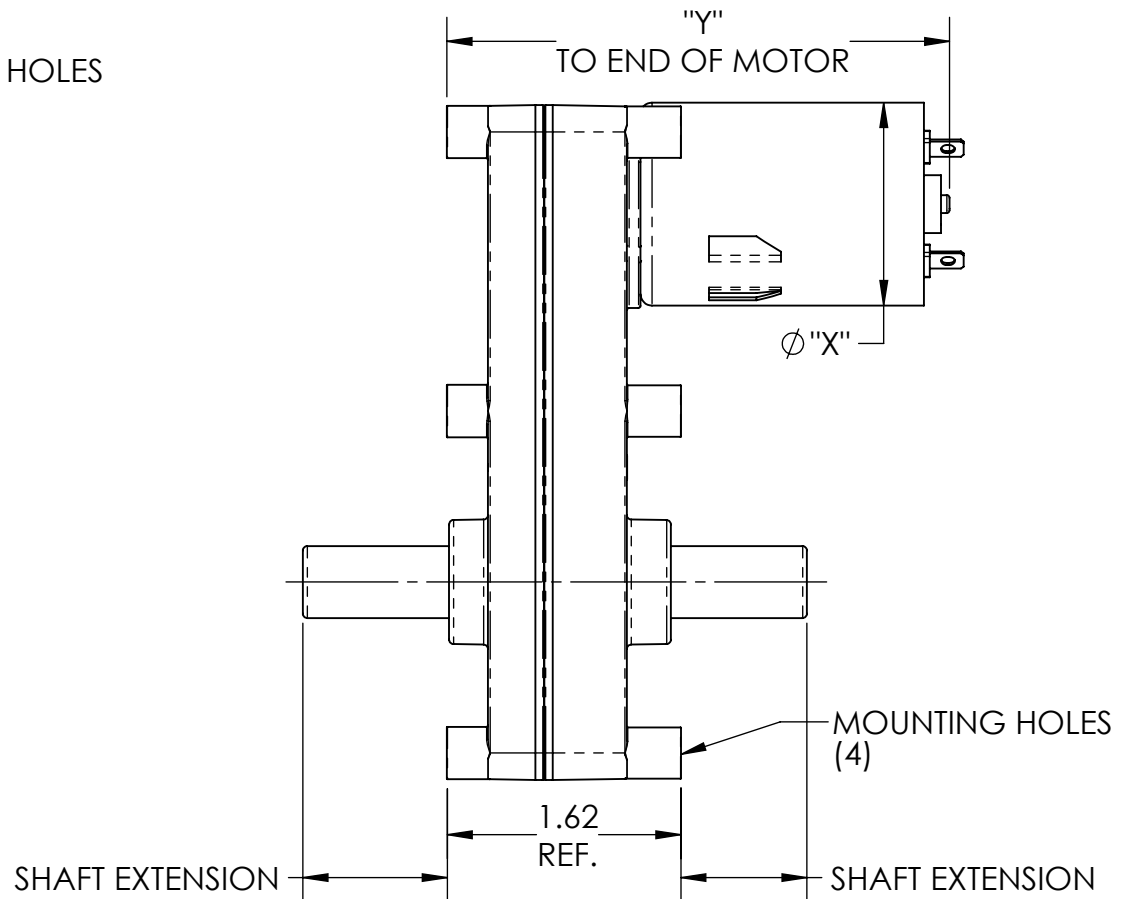
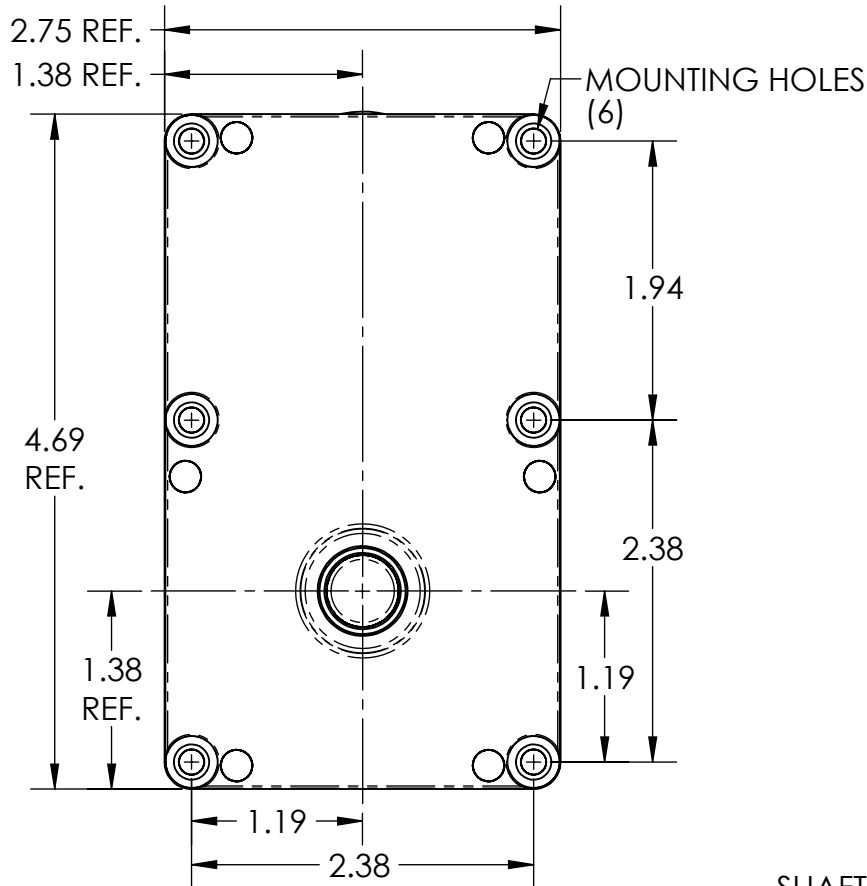
UNLESS OTHERWISE SPECIFIED



MULTI PRODUCTS
Company, Inc.

PART NAME/DESCRIPTION: 9000-DC, 6 FRONT, 0 REAR PADS

DRAWN BY: DAB	DATE: 10/27/2017	SCALE: 0.75:1	MATERIAL: -
CHK'D BY:	DATE:	PART NUMBER: MOD-9000-DC	
APPR'D BY:	DATE:		



FEATURES:

- INDUSTRY STANDARD MOUNTING PATTERN
- OUTPUT SPEEDS FROM 2-40 RPM
- OUTPUT TORQUE UP TO 200 IN-LB
- 12 OR 24 VOLTS DC
- DIE CAST ZINC CASE
- OP SHAFT $\phi .38$ TO $\phi .50$
- CUSTOMER SPEC'D FLATS, KEYWAYS, HOLES, ETC

MOTOR SIZE "X"	ϕ 1.41 (36 MM)	ϕ 1.58 (40 MM)
OVERALL SIZE "Y"	3.49	3.98

TOLERANCES

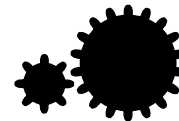
X.XX : ± 0.10

X.XXX : ± 0.05

FRACTION: $\pm 1/64$

ANGLE: $\pm 2^\circ$

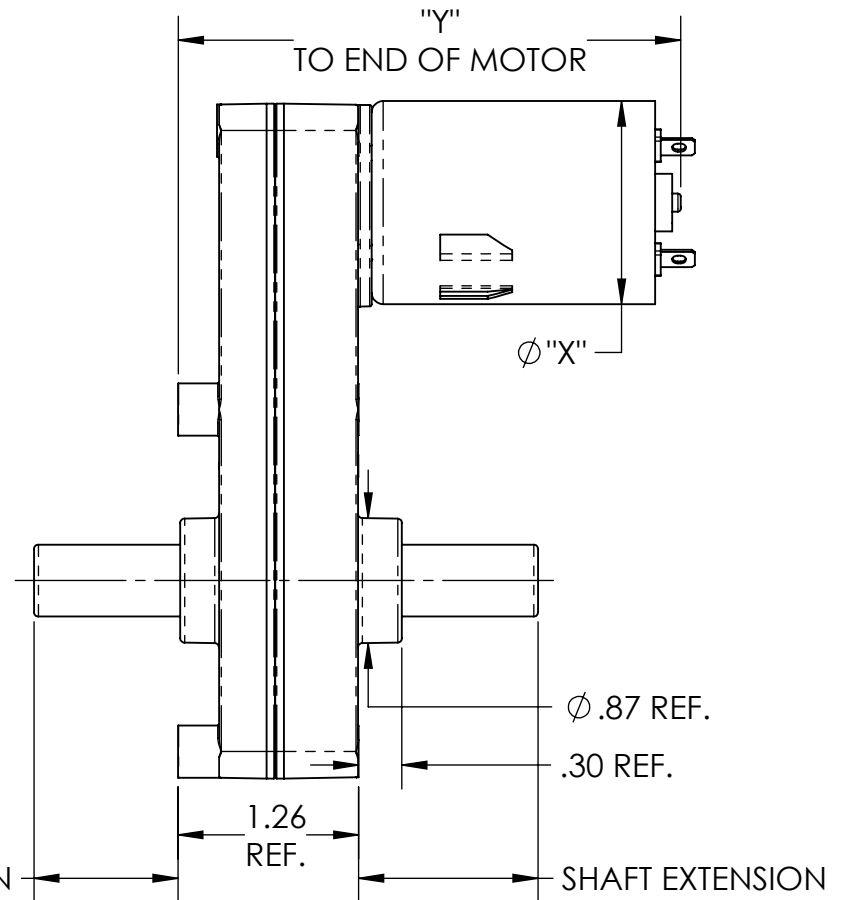
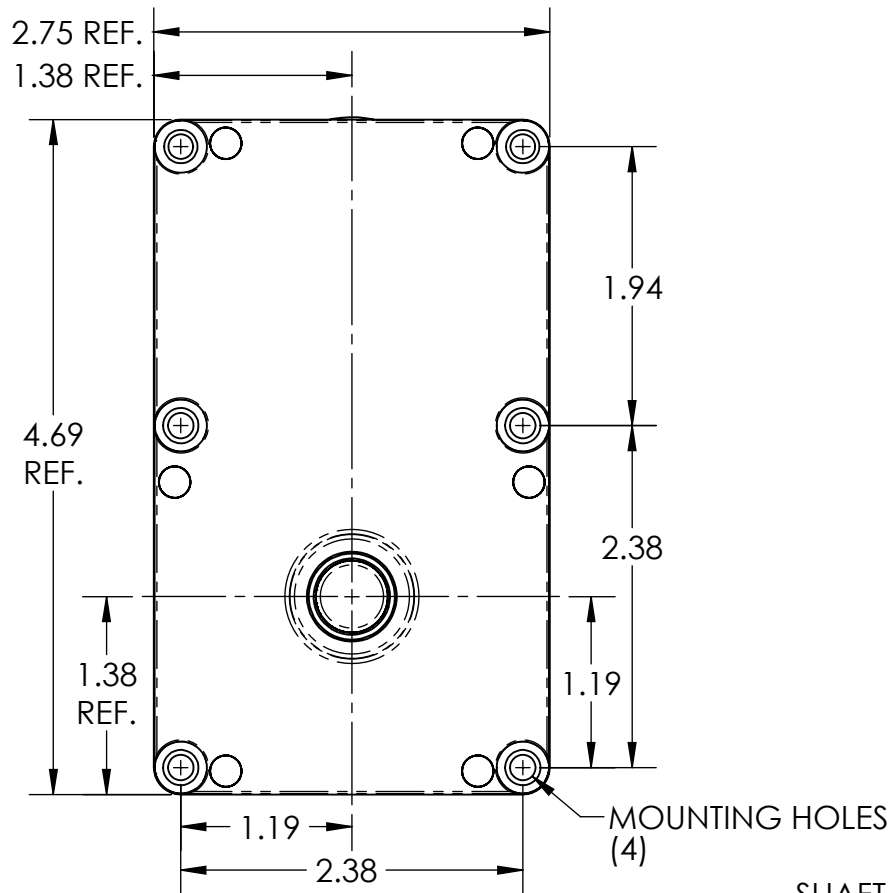
UNLESS OTHERWISE SPECIFIED



MULTI PRODUCTS
Company, Inc.

PART NAME/DESCRIPTION: **9000-DC, 6 FRONT, 4 REAR PADS**

DRAWN BY: DAB	DATE: 10/27/2017	SCALE: 0.75:1	MATERIAL: -
CHK'D BY:	DATE:	PART NUMBER: MOD-9000-DC	
APPR'D BY:	DATE:		



FEATURES:

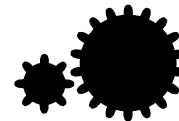
- INDUSTRY STANDARD MOUNTING PATTERN
- OUTPUT SPEEDS FROM 2-40 RPM
- OUTPUT TORQUE UP TO 200 IN-LB
- 12 OR 24 VOLTS DC
- DIE CAST ZINC CASE
- OP SHAFT ϕ .38 TO ϕ .50
- CUSTOMER SPEC'D FLATS, KEYWAYS, HOLES, ETC

MOTOR SIZE "X"	ϕ 1.41 (36 MM)	ϕ 1.58 (40 MM)
OVERALL SIZE "Y"	3.49	3.98

TOLERANCES

- X.XX : \pm .010
- X.XXX : \pm .005
- FRACTION : \pm 1/64
- ANGLE : \pm 2°

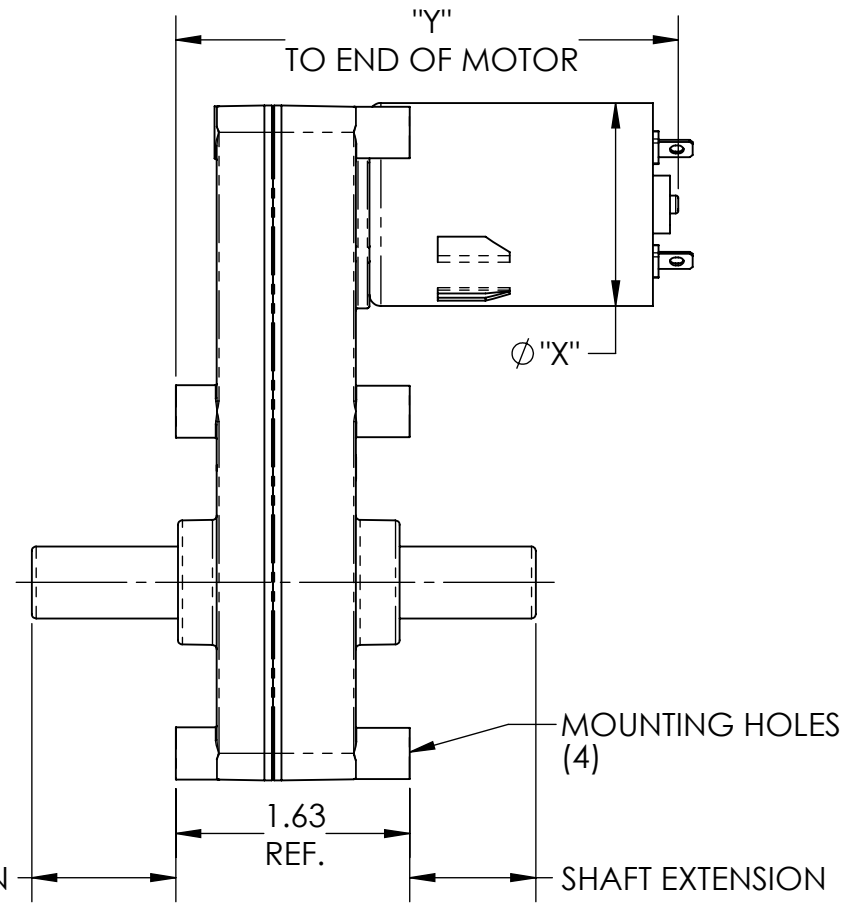
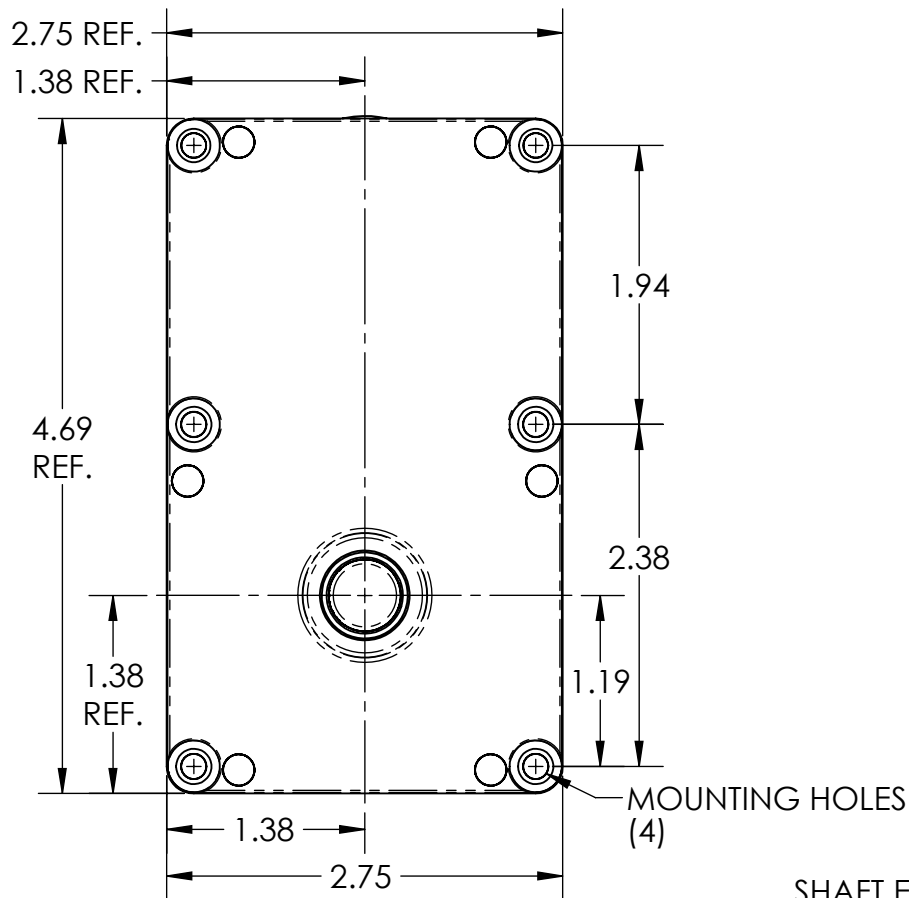
UNLESS OTHERWISE SPECIFIED



MULTI PRODUCTS
Company, Inc.

PART NAME/DESCRIPTION: **9000-DC, 4 FRONT, 0 REAR PADS**

DRAWN BY: DAB	DATE: 10/27/2017	SCALE: 0.75:1	MATERIAL: -
CHK'D BY:	DATE:	PART NUMBER: MOD-9000-DC	
APPR'D BY:	DATE:		



FEATURES:

- INDUSTRY STANDARD MOUNTING PATTERN
- OUTPUT SPEEDS FROM 2-40 RPM
- OUTPUT TORQUE UP TO 200 IN-LB
- 12 OR 24 VOLTS DC
- DIE CAST ZINC CASE
- OP SHAFT ϕ .38 TO ϕ .50
- CUSTOMER SPEC'D FLATS, KEYWAYS, HOLES, ETC

MOTOR SIZE "X"	ϕ 1.41 (36 MM)	ϕ 1.58 (40 MM)
OVERALL SIZE "Y"	3.49	3.98

TOLERANCES

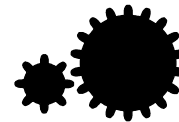
X.XX : \pm .010

X.XXX : \pm .005

FRACTION: \pm 1/64

ANGLE: \pm 2°

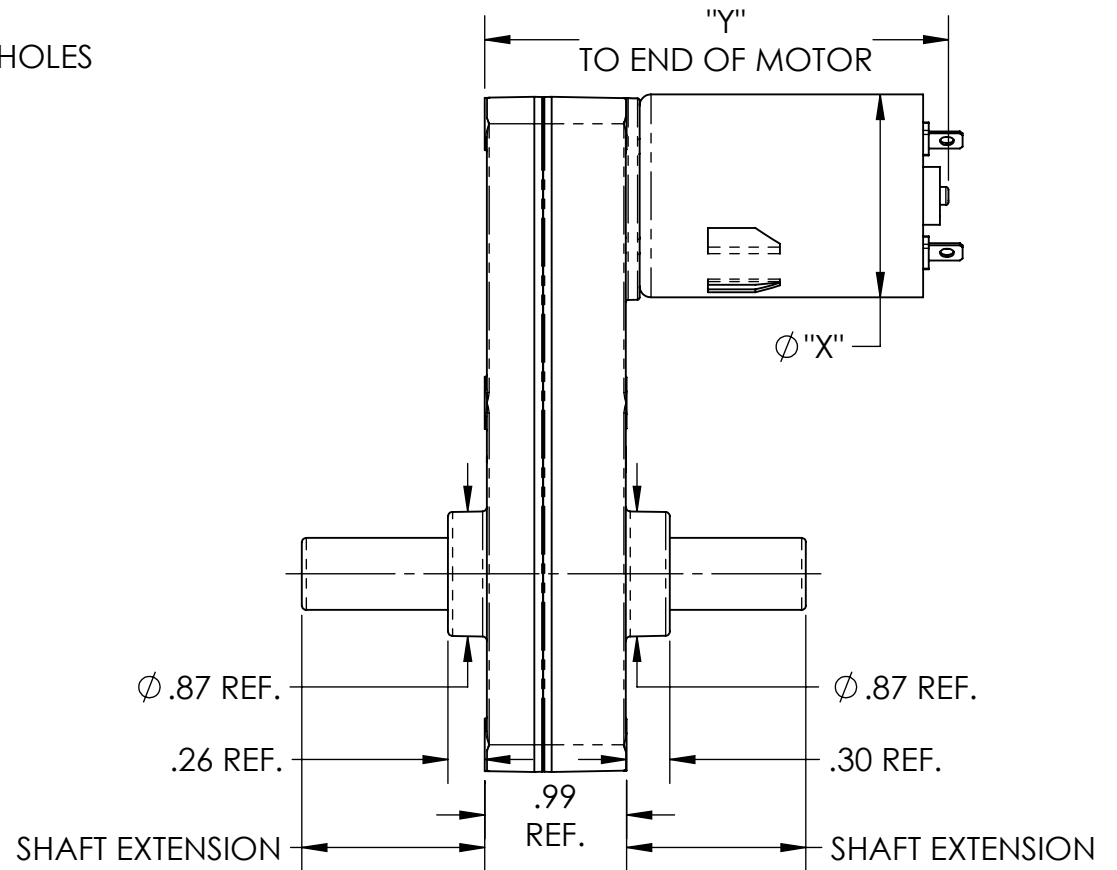
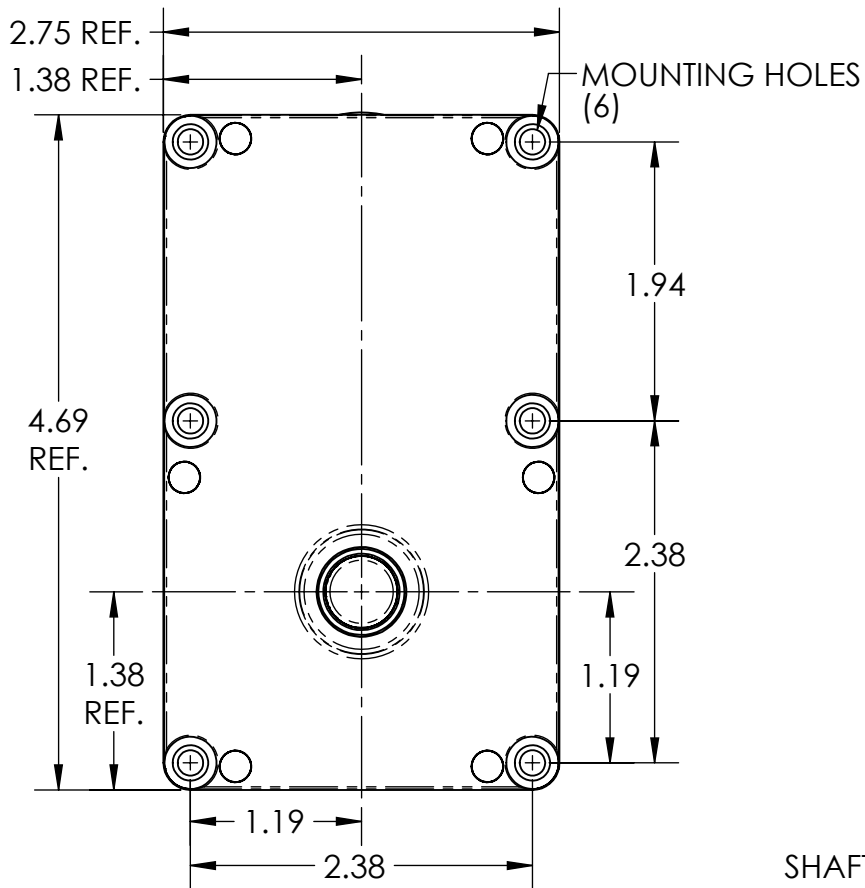
UNLESS OTHERWISE SPECIFIED



MULTI PRODUCTS
Company, Inc.

PART NAME/DESCRIPTION: **9000-DC, 4 FRONT, 4 REAR PADS**

DRAWN BY: DAB	DATE: 10/27/2017	SCALE: 0.75:1	MATERIAL: -
CHK'D BY:	DATE:	PART NUMBER: MOD-9000-DC	
APPR'D BY:	DATE:		



FEATURES:

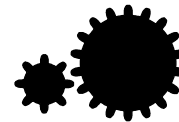
- INDUSTRY STANDARD MOUNTING PATTERN
- OUTPUT SPEEDS FROM 2-40 RPM
- OUTPUT TORQUE UP TO 200 IN-LB
- 12 OR 24 VOLTS DC
- DIE CAST ZINC CASE
- OP SHAFT ϕ .38 TO ϕ .50
- CUSTOMER SPEC'D FLATS, KEYWAYS, HOLES, ETC

MOTOR SIZE "X"	ϕ 1.41 (36 MM)	ϕ 1.58 (40 MM)
OVERALL SIZE "Y"	3.22	3.71

TOLERANCES

- X.XX : \pm .010
- X.XXX : \pm .005
- FRACTION : \pm 1/64
- ANGLE : \pm 2°

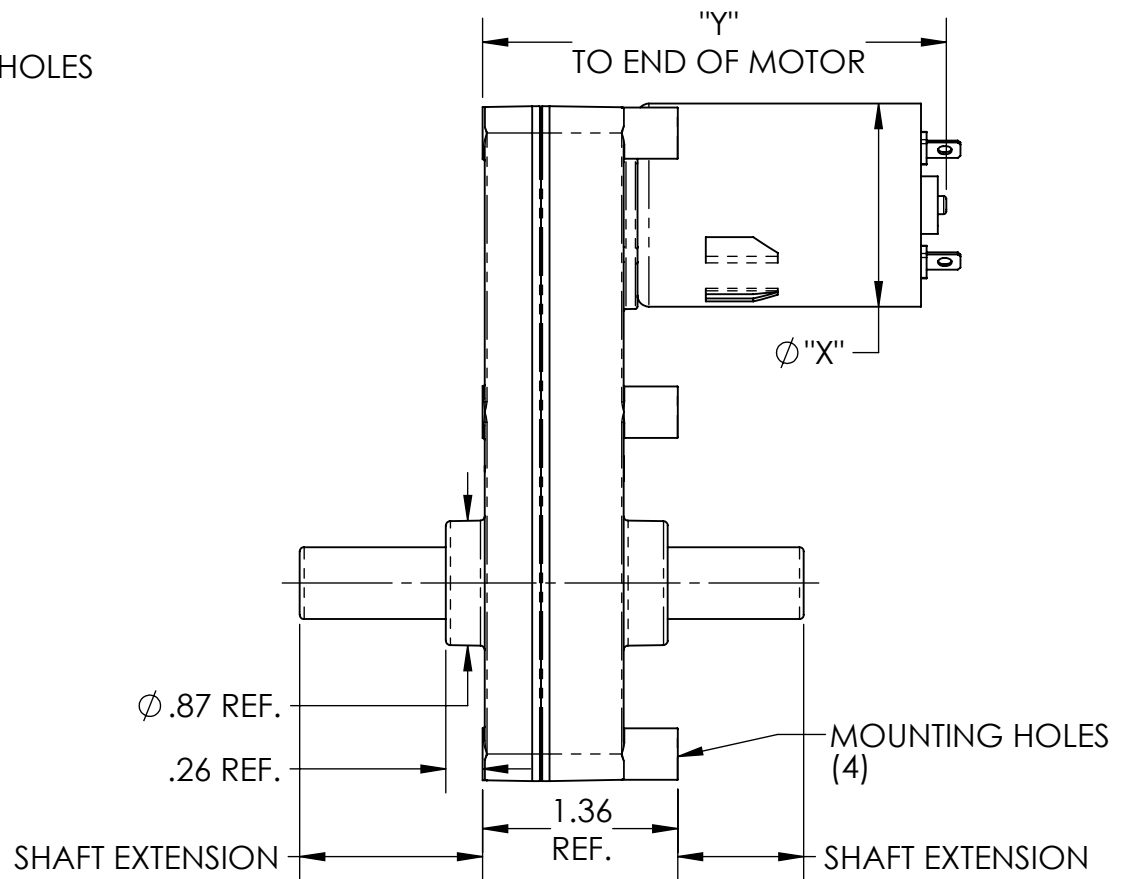
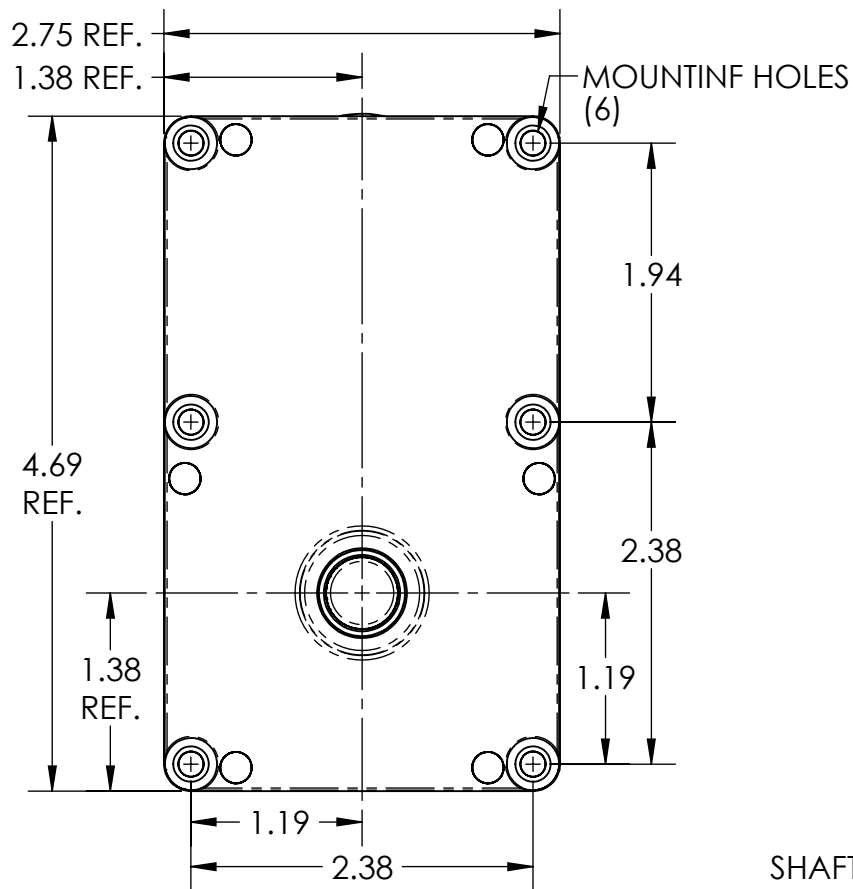
UNLESS OTHERWISE SPECIFIED



MULTI PRODUCTS
Company, Inc.

PART NAME/DESCRIPTION: **9000-DC, 0 FRONT, 0 REAR PADS**

DRAWN BY: DAB	DATE: 10/27/2017	SCALE: 0.75:1	MATERIAL: -
CHK'D BY:	DATE:	PART NUMBER: MOD-9000-DC	
APPR'D BY:	DATE:		



FEATURES:

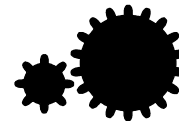
- INDUSTRY STANDARD MOUNTING PATTERN
- OUTPUT SPEEDS FROM 2-40 RPM
- OUTPUT TORQUE UP TO 200 IN-LB
- 12 OR 24 VOLTS DC
- DIE CAST ZINC CASE
- OP SHAFT ϕ .38 TO ϕ .50
- CUSTOMER SPEC'D FLATS, KEYWAYS, HOLES, ETC

MOTOR SIZE "X"	ϕ 1.41 (36 MM)	ϕ 1.58 (40 MM)
OVERALL SIZE "Y"	3.22	3.71

TOLERANCES

- X.XX : \pm .010
- X.XXX : \pm .005
- FRACTION: \pm 1/64
- ANGLE: \pm 2°

UNLESS OTHERWISE SPECIFIED



MULTI PRODUCTS
Company, Inc.

PART NAME/DESCRIPTION: **9000-DC, 0 FRONT, 4 REAR PADS**

DRAWN BY: DAB	DATE: 10/27/2017	SCALE: 0.75:1	MATERIAL: -
CHK'D BY:	DATE:	PART NUMBER: MOD-9000-DC	
APPR'D BY:	DATE:		