

FEATURES:

- INDUSTRY STANDARD MOUNTING PATTERN
- OUTPUT SPEEDS FROM 4-200 RPM
- 12 OR 24 VOLTS DC
- DIE CAST ZINC CASE
- OP SHAFT ϕ .31 TO ϕ .38
- CUSTOMER SPEC'D FLATS, KEYWAYS, HOLES, ETC

MOTOR SIZE "X"	ϕ 1.09 (28 MM)	ϕ 1.41 (36 MM)	ϕ 1.58 (40 MM)
OVERALL SIZE "Y"	2.65	3.20	3.69

TOLERANCES

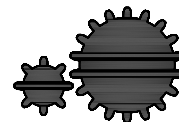
X.XX : \pm .010

X.XXX : \pm .005

FRACTION: \pm 1/64

ANGLE: \pm 2°

UNLESS OTHERWISE SPECIFIED



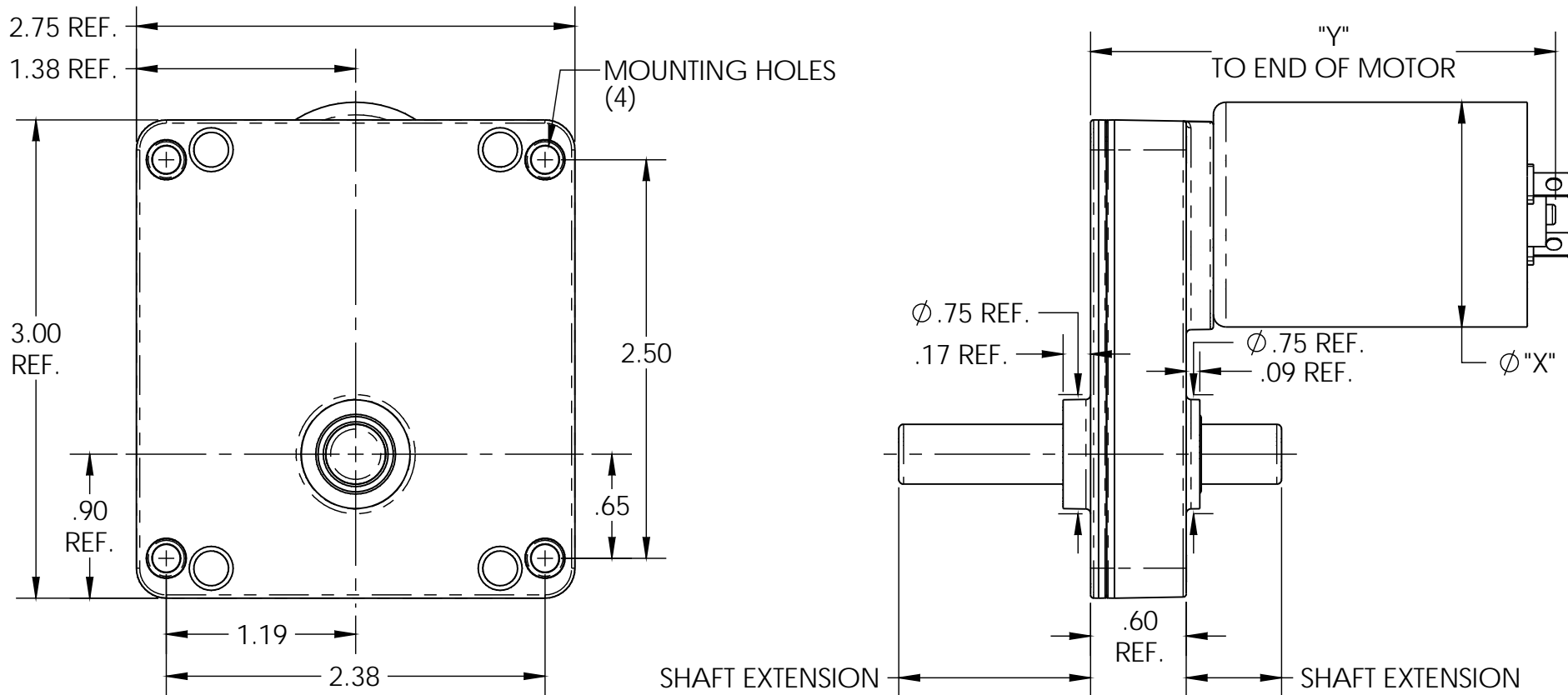
MULTI PRODUCTS
Company, Inc.

PART NAME/DESCRIPTION: **MODEL 7000 DC, DEEP COVER**

DRAWN BY: DAB DATE: 9/26/2017 SCALE: 1:1 MATERIAL: SEE BOM

CHK'D BY: - DATE: - PART NUMBER: **MOD-7000-DC**

APPR'D BY: - DATE: -



FEATURES:

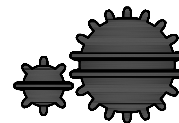
- INDUSTRY STANDARD MOUNTING PATTERN
- OUTPUT SPEEDS FROM 4-200 RPM
- 12 OR 24 VOLTS DC
- DIE CAST ZINC CASE
- OP SHAFT ϕ .31 TO ϕ .38
- CUSTOMER SPEC'D FLATS, KEYWAYS, HOLES, ETC

MOTOR SIZE "X"	ϕ 1.09 (28 MM)	ϕ 1.41 (36 MM)	ϕ 1.58 (40 MM)
OVERALL SIZE "Y"	2.37	2.92	3.41

TOLERANCES

- X.XX: \pm .010
- X.XXX: \pm .005
- FRACTION: \pm 1/64
- ANGLE: \pm 2°

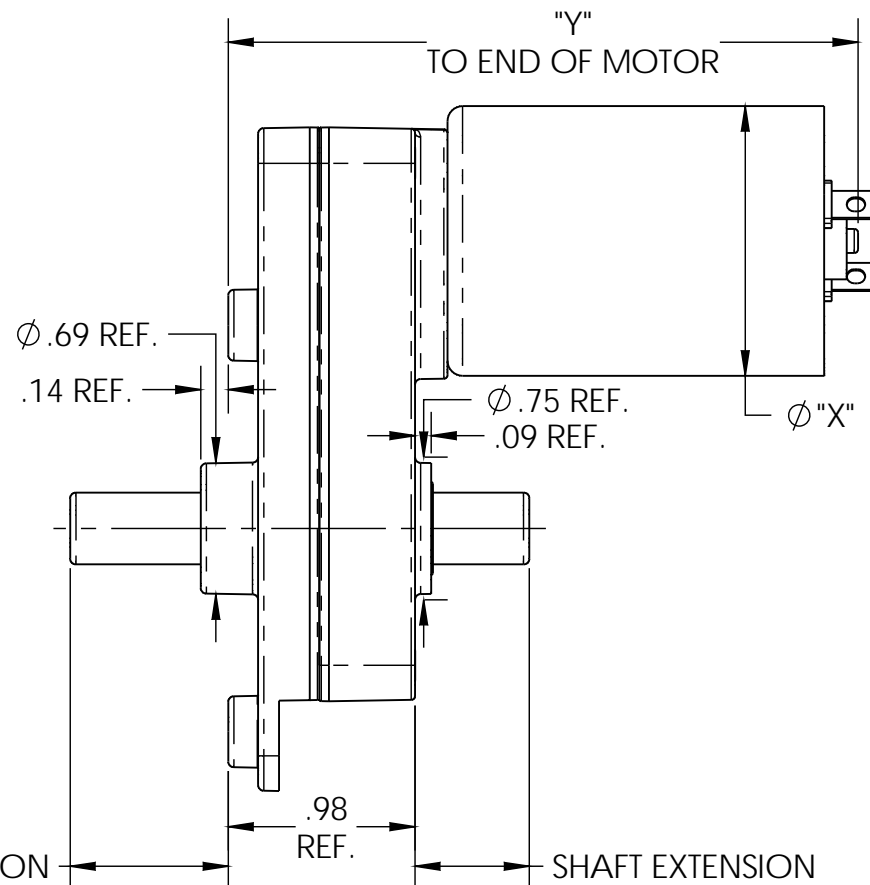
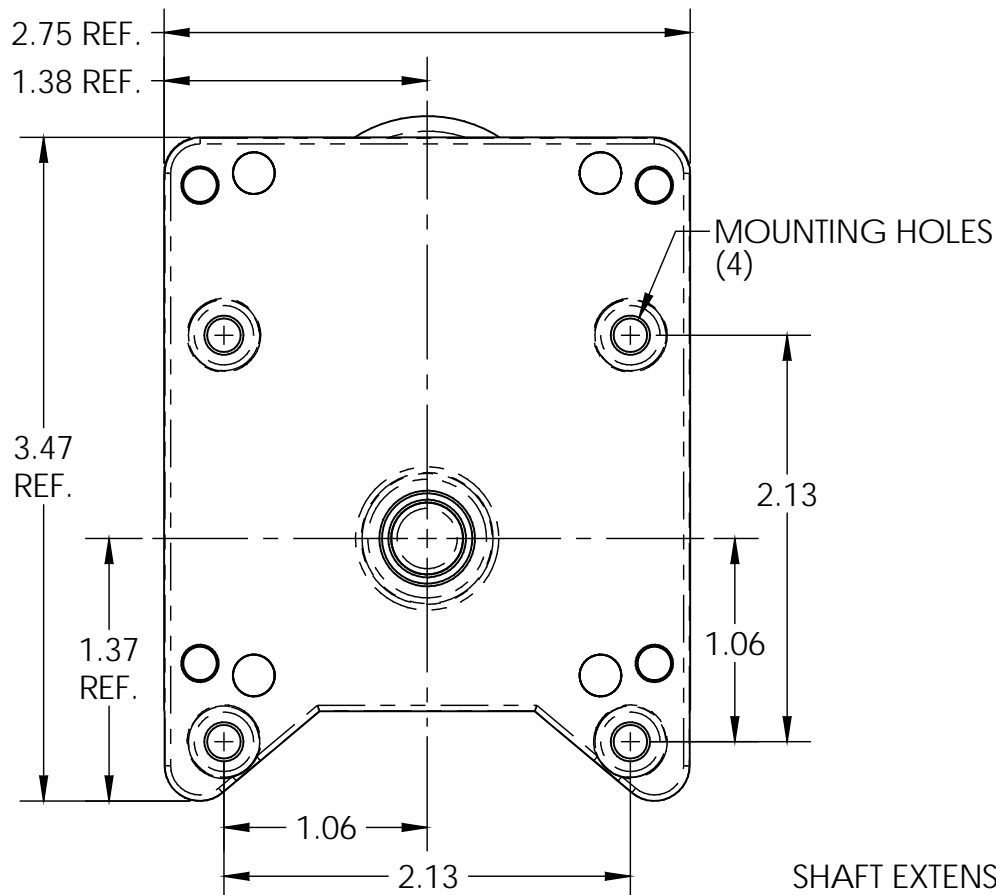
UNLESS OTHERWISE SPECIFIED



MULTI PRODUCTS
Company, Inc.

PART NAME/DESCRIPTION: **MODEL 7000 DC, FLAT COVER**

DRAWN BY: DAB	DATE: 9/26/2017	SCALE: 1:1	MATERIAL: SEE BOM
CHK'D BY: -	DATE:	PART NUMBER: MOD-7000-DC	
APPR'D BY: -	DATE:		



FEATURES:

- INDUSTRY STANDARD MOUNTING PATTERN
- OUTPUT SPEEDS FROM 4-200 RPM
- 12 OR 24 VOLTS DC
- DIE CAST ZINC CASE
- OP SHAFT ϕ .31 TO ϕ .38
- CUSTOMER SPEC'D FLATS, KEYWAYS, HOLES, ETC

MOTOR SIZE "X"	ϕ 1.09 (28 MM)	ϕ 1.41 (36 MM)	ϕ 1.58 (40 MM)
OVERALL SIZE "Y"	2.74	3.29	3.78

TOLERANCES

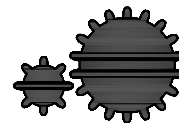
X.XX : \pm 010

X.XXX : \pm 005

FRACTION: \pm 1/64

ANGLE: \pm 2°

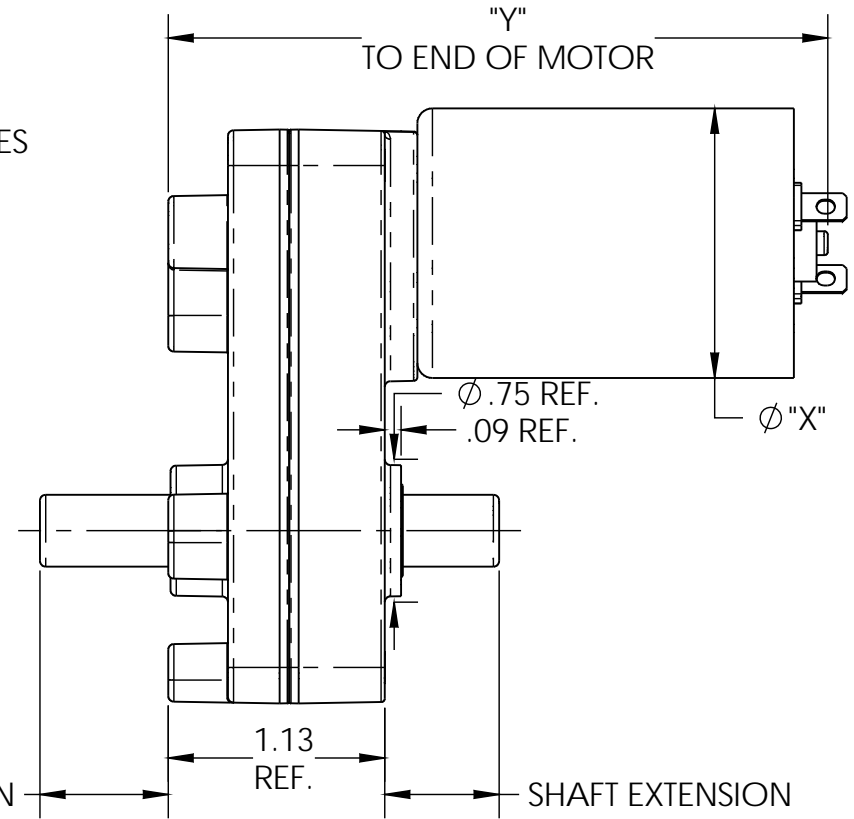
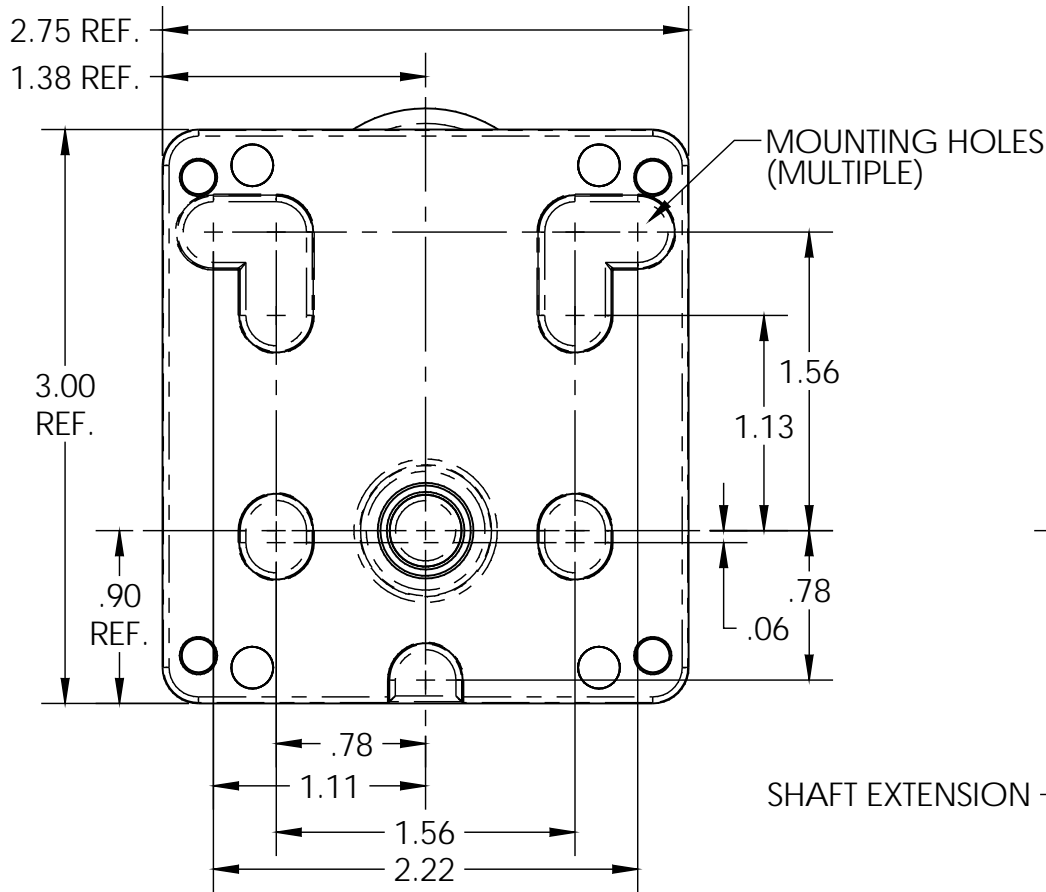
UNLESS OTHERWISE SPECIFIED



MULTI PRODUCTS
Company, Inc.

PART NAME/DESCRIPTION: **MODEL 7000 DC, SQUARE COVER**

DRAWN BY: DAB	DATE: 9/26/2017	SCALE: 1:1	MATERIAL: SEE BOM
CHK'D BY: -	DATE:	PART NUMBER: MOD-7000-DC	
APPR'D BY: -	DATE:		



FEATURES:

- INDUSTRY STANDARD MOUNTING PATTERN
- OUTPUT SPEEDS FROM 4-200 RPM
- 12 OR 24 VOLTS DC
- DIE CAST ZINC CASE
- OP SHAFT ϕ .31 TO ϕ .38
- CUSTOMER SPEC'D FLATS, KEYWAYS, HOLES, ETC

MOTOR SIZE "X"	ϕ 1.09 (28 MM)	ϕ 1.46 (35 MM)	ϕ 1.58 (40 MM)
OVERALL SIZE "Y"	2.90	3.45	3.94

TOLERANCES

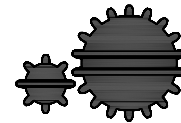
X.XX: \pm .010

X.XXX: \pm .005

FRACTION: \pm 1/64

ANGLE: \pm 2°

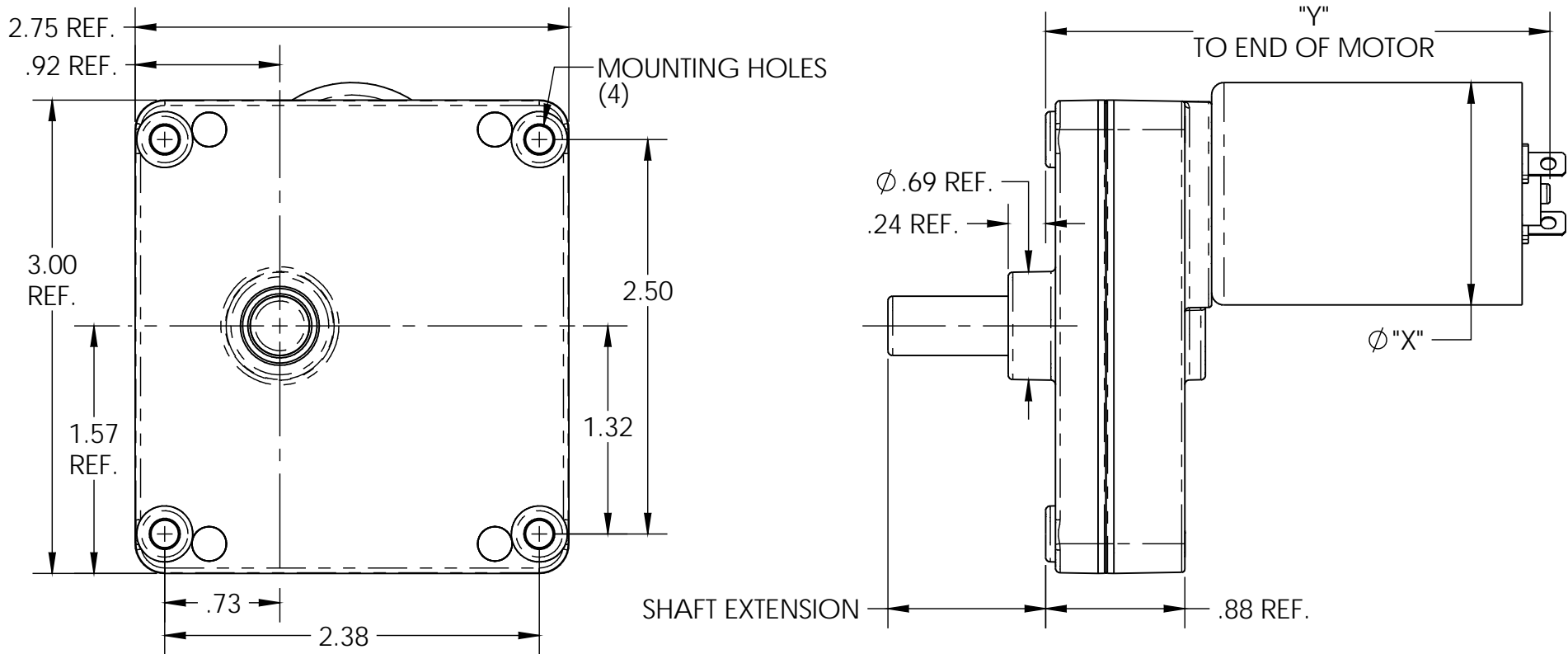
UNLESS OTHERWISE SPECIFIED



MULTI PRODUCTS
Company, Inc.

PART NAME/DESCRIPTION: MODEL 7000 DC, DEEP COVER, PADS

DRAWN BY: DAB	DATE: 9/26/2017	SCALE: 1:1	MATERIAL: SEE BOM
CHK'D BY: -	DATE:	PART NUMBER: MOD-7000-DC	
APPR'D BY: -	DATE:		



FEATURES:

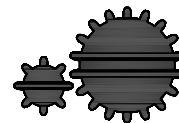
- INDUSTRY STANDARD MOUNTING PATTERN WITH OFFSET SHAFT
- OUTPUT SPEEDS FROM 4-200 RPM
- 12 OR 24 VOLTS DC
- DIE CAST ZINC CASE
- OP SHAFT ϕ .31 TO ϕ .38
- CUSTOMER SPEC'D FLATS, KEYWAYS, HOLES, ETC

MOTOR SIZE "X"	ϕ 1.09 (28 MM)	ϕ 1.41 (36 MM)	ϕ 1.58 (40 MM)
OVERALL SIZE "Y"	2.65	3.20	3.69

TOLERANCES

- X.XX : \pm .010
- X.XXX : \pm .005
- FRACTION: \pm 1/64
- ANGLE: \pm 2°

UNLESS OTHERWISE SPECIFIED

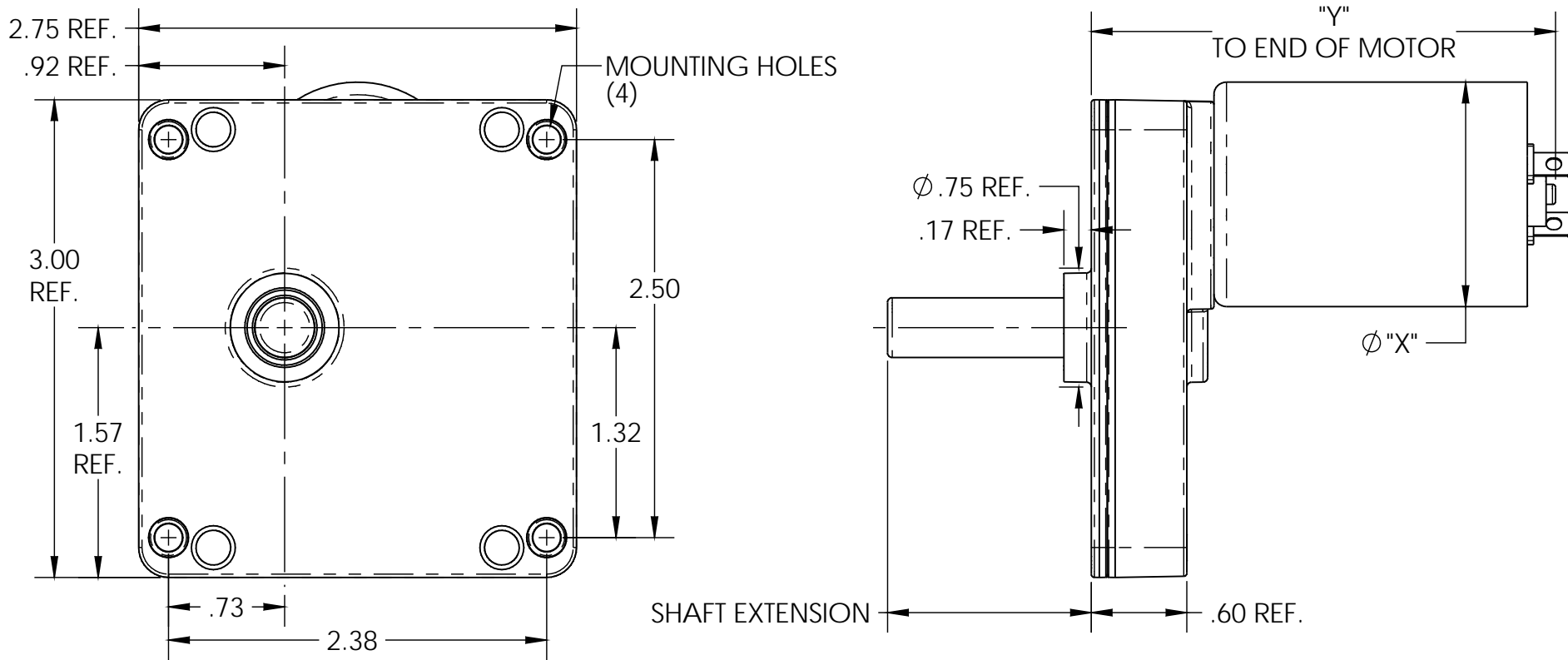


MULTI PRODUCTS
Company, Inc.

PART NAME/DESCRIPTION: **MODEL 7000X DC, DEEP COVER**

DRAWN BY: DAB	DATE: 10/10/2017	SCALE: 1:1	MATERIAL: SEE BOM
---------------	------------------	------------	-------------------

CHK'D BY: -	DATE:	PART NUMBER: MOD-7000X-DC
APPR'D BY: -	DATE:	



FEATURES:

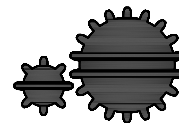
- INDUSTRY STANDARD MOUNTING PATTERN WITH OFFSET SHAFT
- OUTPUT SPEEDS FROM 4-200 RPM
- 12 OR 24 VOLTS DC
- DIE CAST ZINC CASE
- OP SHAFT $\phi .31$ TO $\phi .38$
- CUSTOMER SPEC'D FLATS, KEYWAYS, HOLES, ETC

MOTOR SIZE "X"	ϕ 1.09 (28 MM)	ϕ 1.41 (36 MM)	ϕ 1.58 (40 MM)
OVERALL SIZE "Y"	2.37	2.92	3.41

TOLERANCES

- X.XX : ± 010
- X.XXX : ± 005
- FRACTION : $\pm 1/64$
- ANGLE : $\pm 2^\circ$

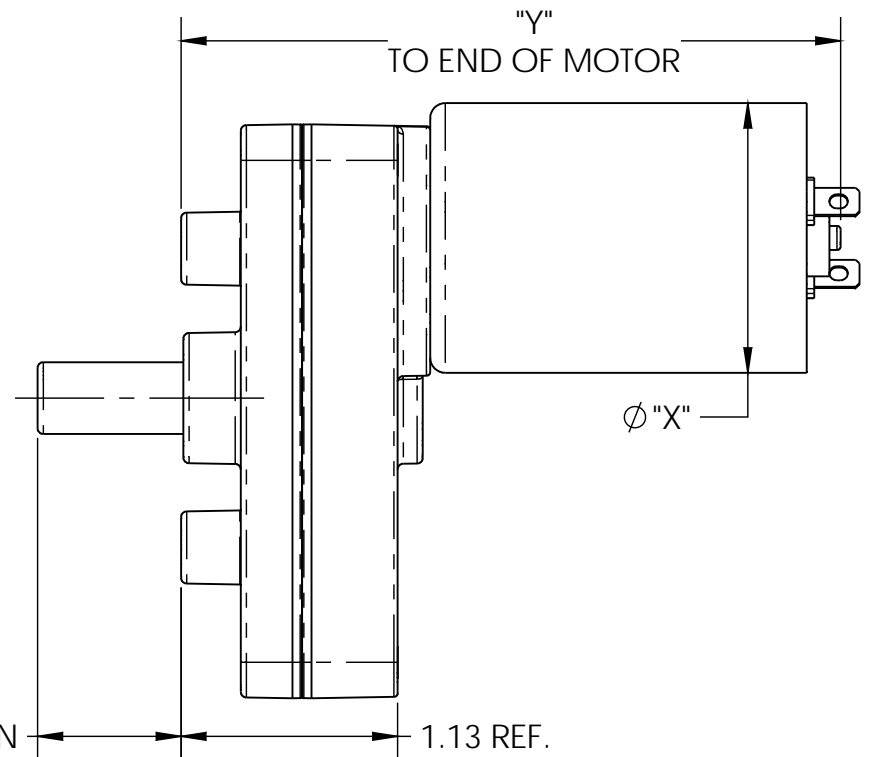
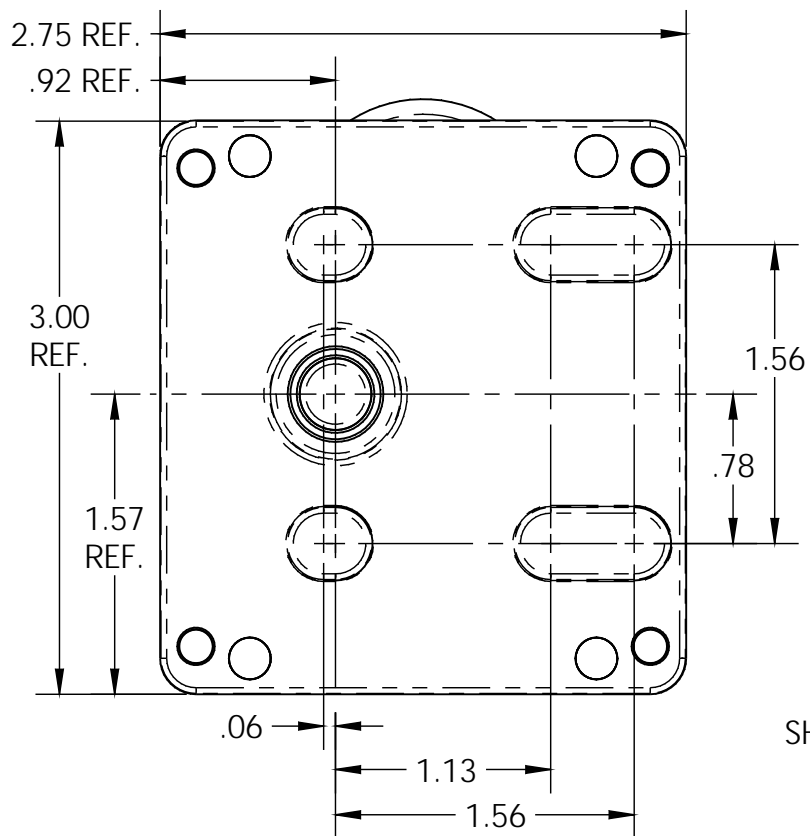
UNLESS OTHERWISE SPECIFIED



MULTI PRODUCTS
Company, Inc.

PART NAME/DESCRIPTION: **MODEL 7000X DC, FLAT COVER**

DRAWN BY: DAB	DATE: 10/10/2017	SCALE: 1:1	MATERIAL: SEE BOM
CHK'D BY: -	DATE:	PART NUMBER: MOD-7000X-DC	
APPR'D BY: -	DATE:		



FEATURES:

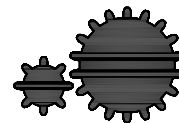
- INDUSTRY STANDARD MOUNTING PATTERN WITH OFFSET SHAFT
- OUTPUT SPEEDS FROM 4-200 RPM
- 12 OR 24 VOLTS DC
- DIE CAST ZINC CASE
- OP SHAFT $\phi .31$ TO $\phi .38$
- CUSTOMER SPEC'D FLATS, KEYWAYS, HOLES, ETC

MOTOR SIZE "X"	ϕ 1.09 (28 MM)	ϕ 1.41 (36 MM)	ϕ 1.58 (40 MM)
OVERALL SIZE "Y"	2.74	3.29	3.78

TOLERANCES

- X.XX: ± 0.10
- X.XXX: ± 0.05
- FRACTION: $\pm 1/64$
- ANGLE: $\pm 2^\circ$

UNLESS OTHERWISE SPECIFIED



MULTI PRODUCTS
Company, Inc.

PART NAME/DESCRIPTION: **MODEL 7000X DC, DEEP COVER,**

PADS

DRAWN BY: DAB DATE: 7/10/2017 SCALE: 1:1 MATERIAL: SEE BOM

CHK'D BY: - DATE: - PART NUMBER: **MOD-7000X-DC**

APPR'D BY: - DATE: -