



9000 Series Gearbox

Heavy Duty - The Strongest



Gearbox Specifications

The 9000 Series is the largest and most robust gearbox we offer. Capable of handling torque ratings up to 200 in-lb continuously. Constructed with a zinc die-cast housing. Output shaft diameters range from 1/4" through 3/8" with flats, keyways, threads, square ends, or hollow-thru shafts. Other options: multiple gearing materials, needle or ball bearings, and custom wiring harnesses.



Applications: Foodservice Equipment, Agriculture, Industrial Machinery, Material Handling, Conveyors, and Pharmaceutical/Healthcare

Features:

- Zinc die-cast housing
- Various industry standard mounting options
- Permanently lubricated with synthetic gear grease
- AC Motors - Pawl or cone brake options
- Robust steel cut and PM geartrain



9000 DC GEARMOTOR

Information and Specifications

Compatible DC Motor Options



Shown with hollow-thru shaft



Shown with Brushless DC motor



Economical Line



Precision Line



DC Model	615	28Y	Brushless
Voltage	12 / 24V	12 / 24V	24V
Speed	1450-5745 RPM	2538-5615 RPM	4172 RPM
Torque	1.4-2.5 oz-in.	2.6-4.0 oz-in.	10.0 oz-in.
Power	—	4.8-16.3W	30.8W
Frame Size	36mm	40mm	42mm
Reversible	Yes	Yes	Yes
Motor Life*	1000+ Hours	3000+ Hours	20000+ Hours

*Estimated life - brush life dependent on duty cycle, application, and environment.

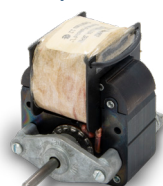
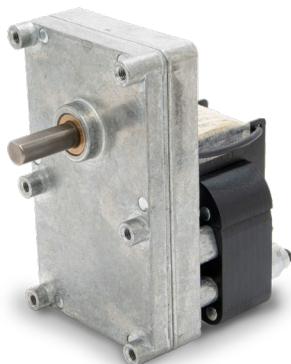
DC Gearmotor Performance Specifications

DC Motor	Voltage	Rated Torque	Rated Speed	Rotation	Shaft Size
615 - Medium Frame	12 / 24V	12 - 100 in-lbs.	2 - 40 RPM	Reversible	3/8" to 1/2"
28Y - Medium Frame	12 / 24V	7 - 100 in-lbs.	4 - 40 RPM	Reversible	3/8" to 1/2"

9000 AC GEARMOTOR

Information & Specifications

Compatible AC Motor Options



Shaded Pole Motor



Synchronous Motor

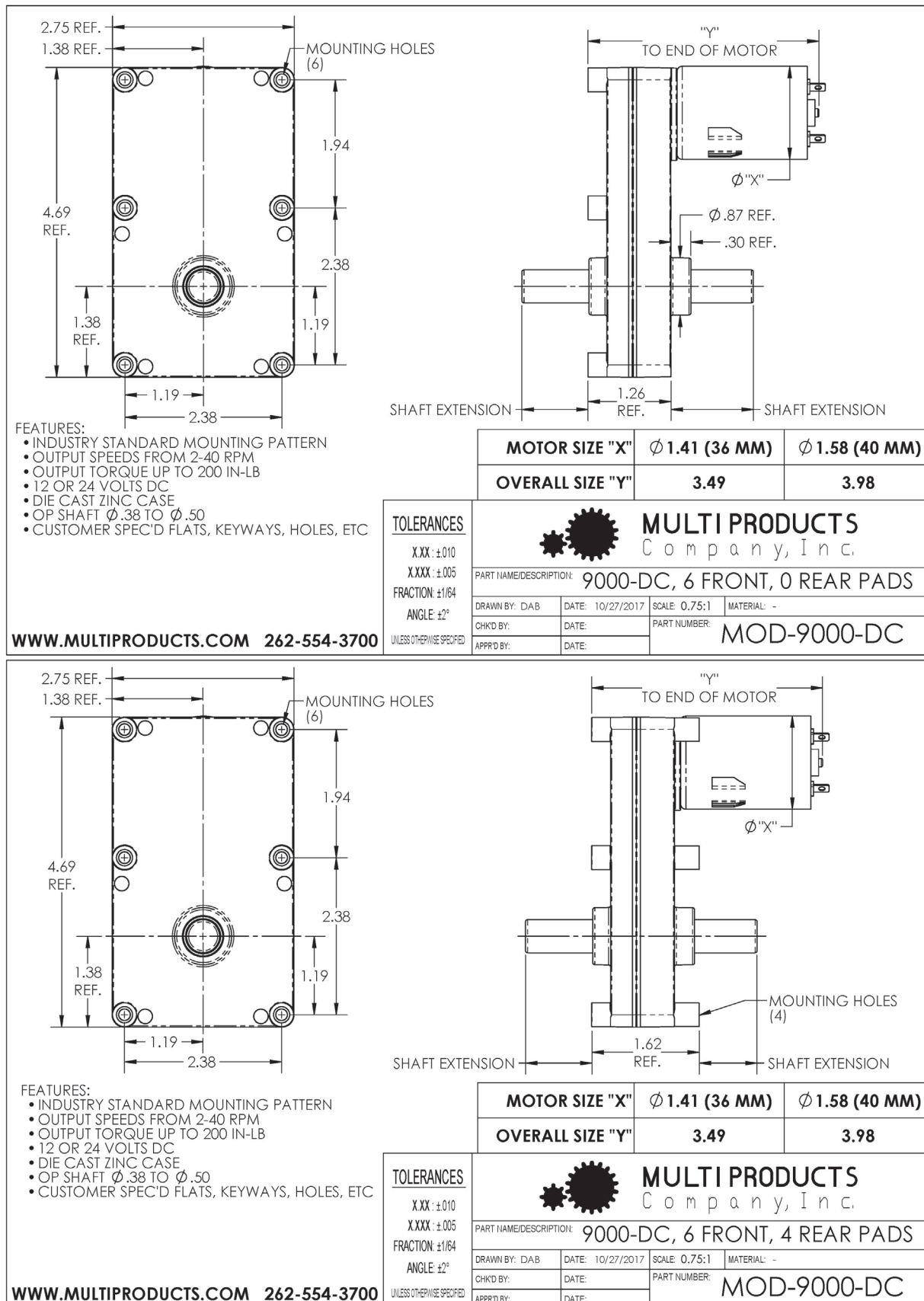
AC Motor	Shaded Pole	Synchronous
Voltage	24 - 480 V	120/230/240 V
Frequency	50 / 60 Hz	50 / 60 Hz
Rated Speed	3000 RPM	250 / 300 RPM
Rated Torque	Up to 11 in-oz	8.5 oz-in.
Rotation	Uni-directional	Reversible

Shaded Pole AC Gearmotor Performance Specifications

Core Stack Size	Voltage	Rated Torque	Rated Speed	Rotation	Shaft Size
0.625"	120 - 240 VAC	3.5 - 190 in-lbs.	1 - 40 RPM	Uni-directional	3/8" to 1/2"
0.75"	120 - 240 VAC	5.0 - 200 in-lbs.	1 - 40 RPM	Uni-directional	3/8" to 1/2"
1.0625"	120 - 240 VAC	7.0 - 200 in-lbs.	1 - 40 RPM	Uni-directional	3/8" to 1/2"
2.00"	120 - 240 VAC	11 - 200 in-lbs.	1 - 40 RPM	Uni-directional	3/8" to 1/2"



DC Gearmotor Drawing



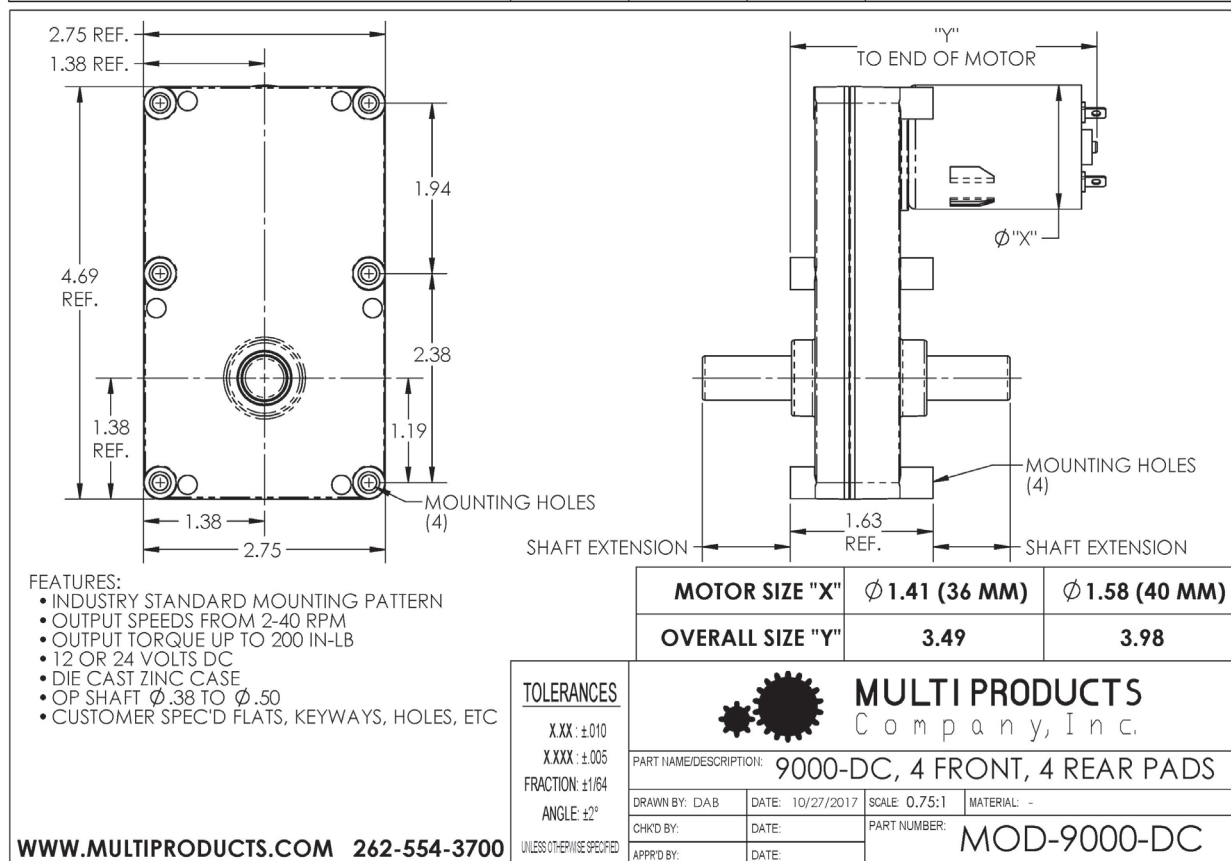
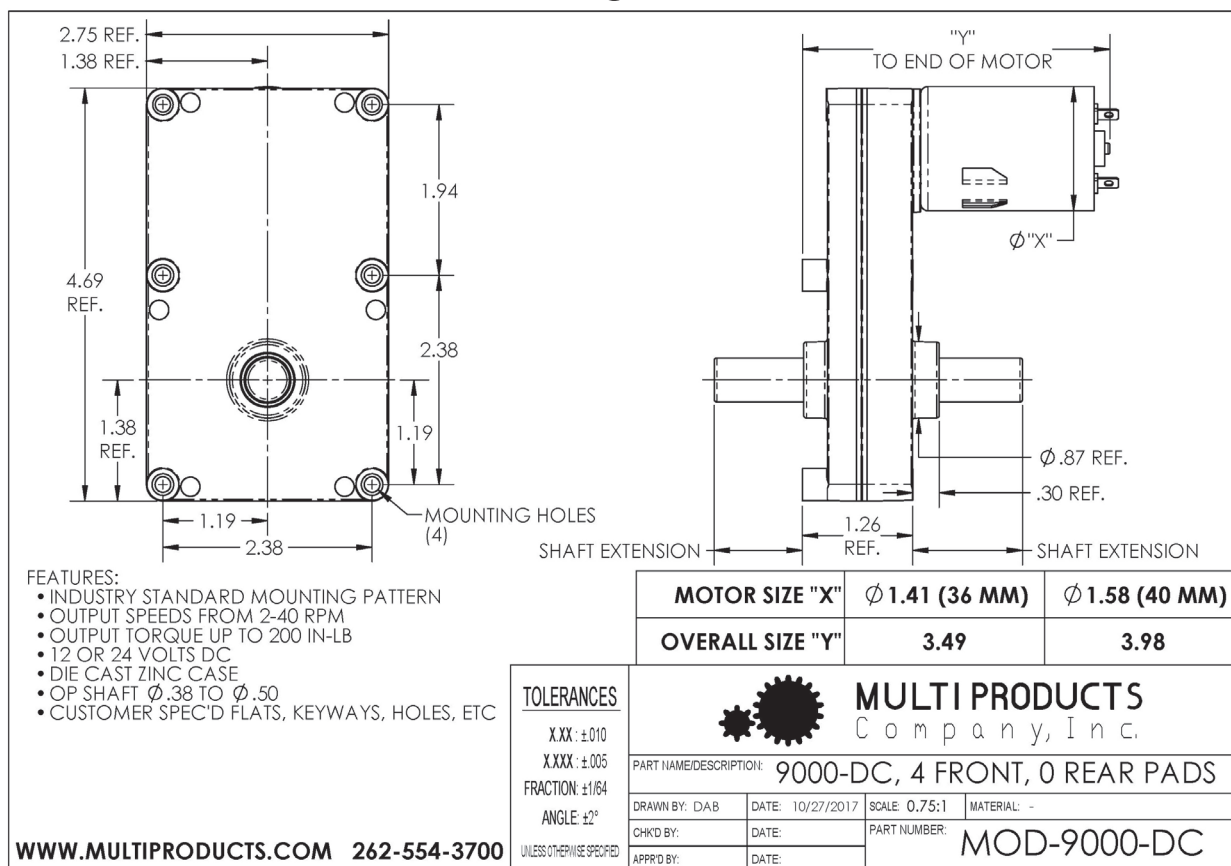


Outline Drawings

DC and AC Motor Outline Drawings



DC Gearmotor Drawing



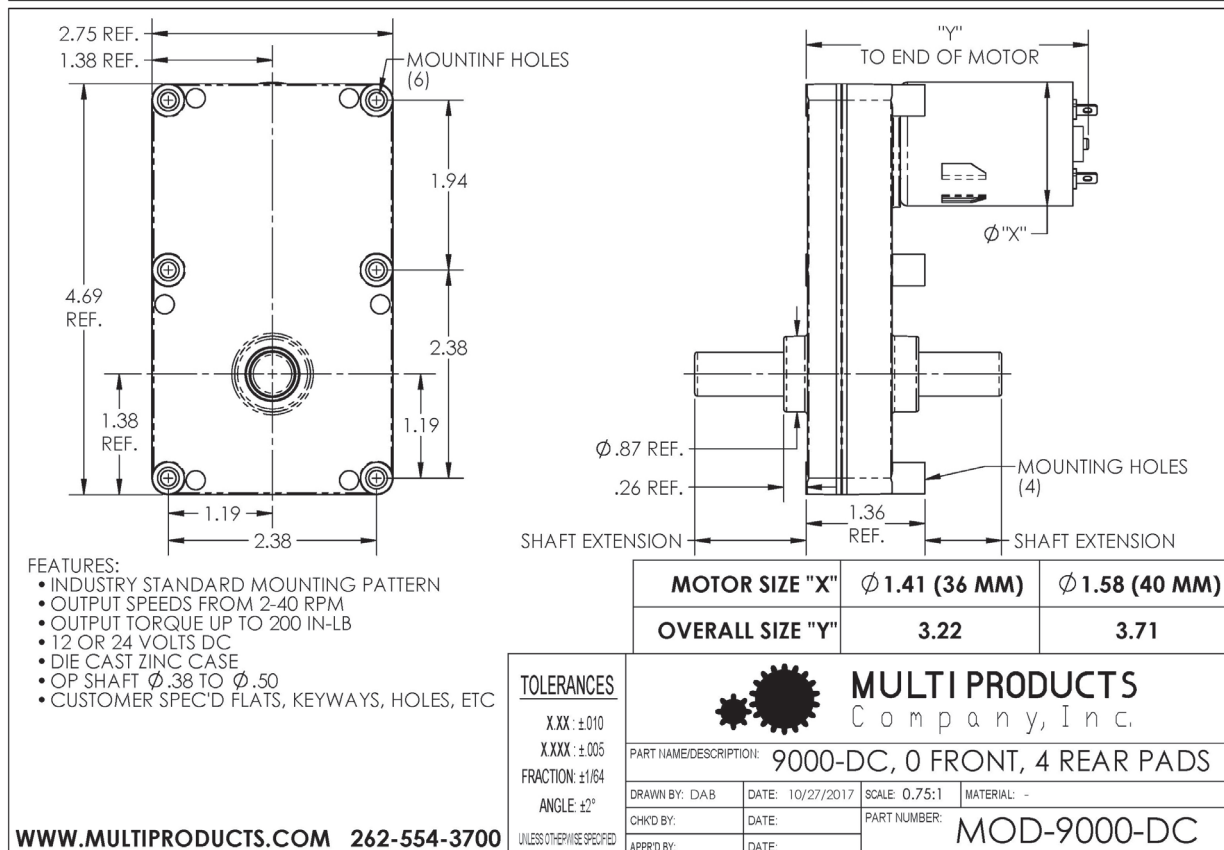
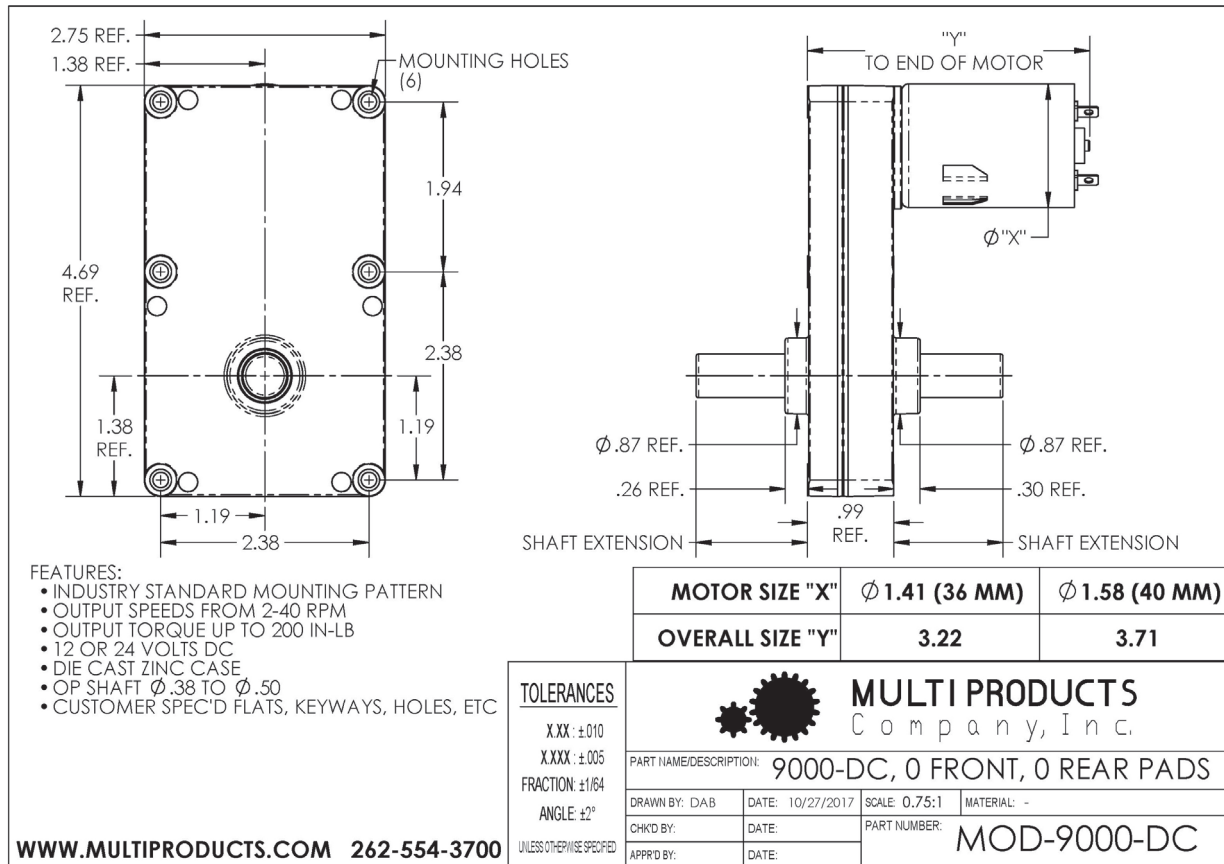


Outline Drawings

DC and AC Motor Outline Drawings



DC Gearmotor Drawing



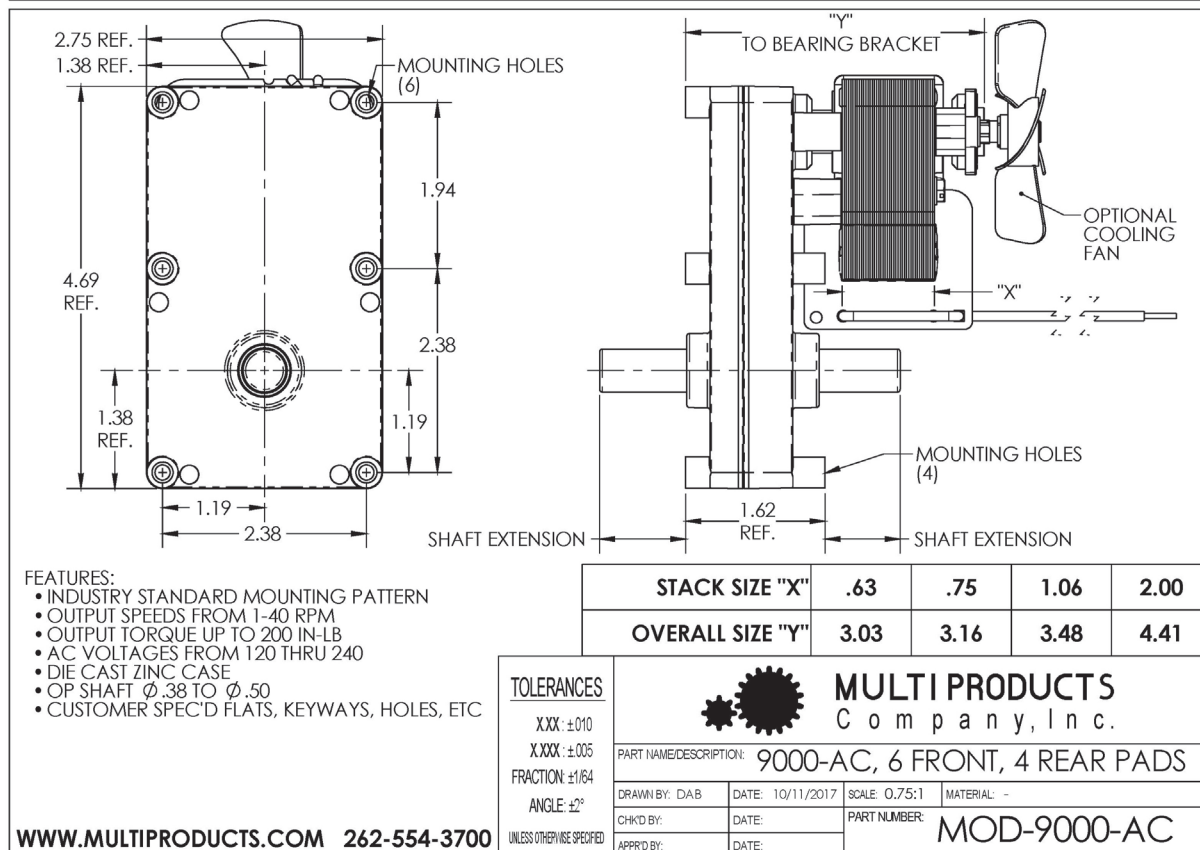
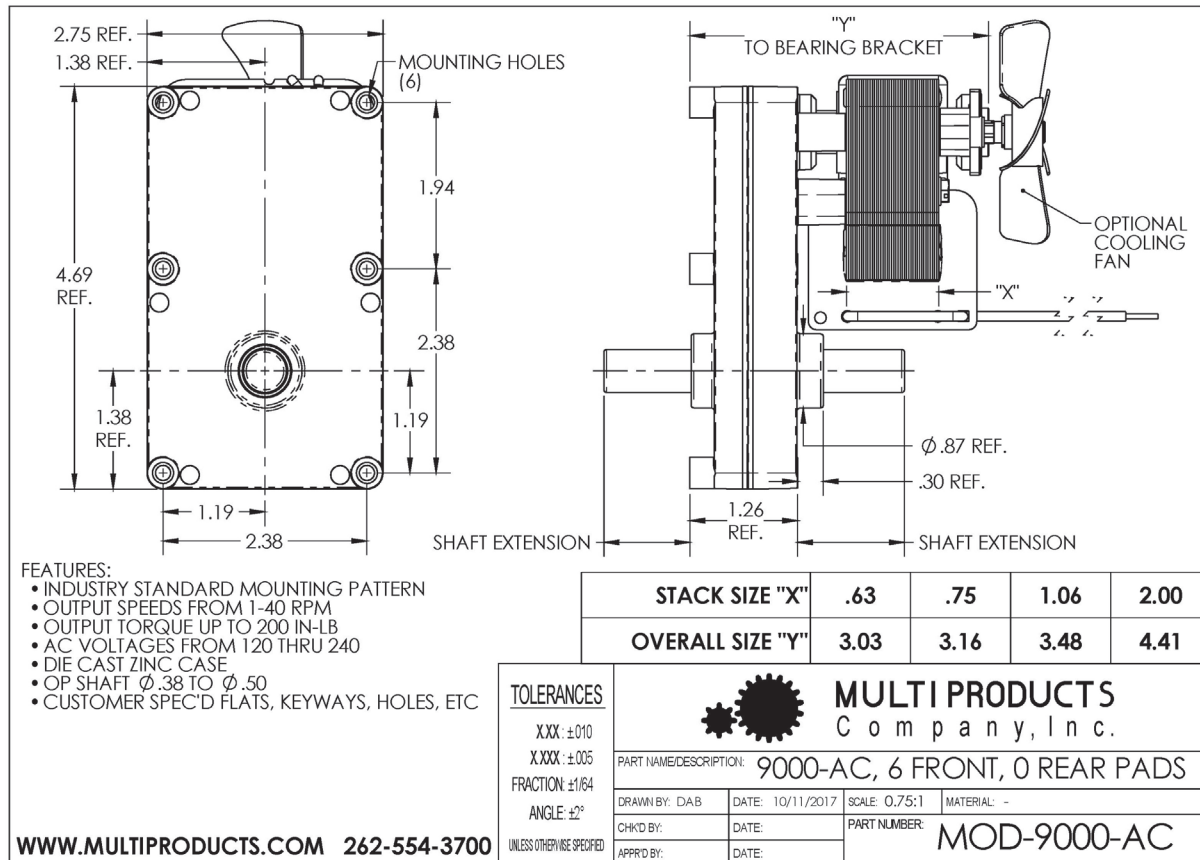


Outline Drawings

DC and AC Motor Outline Drawings

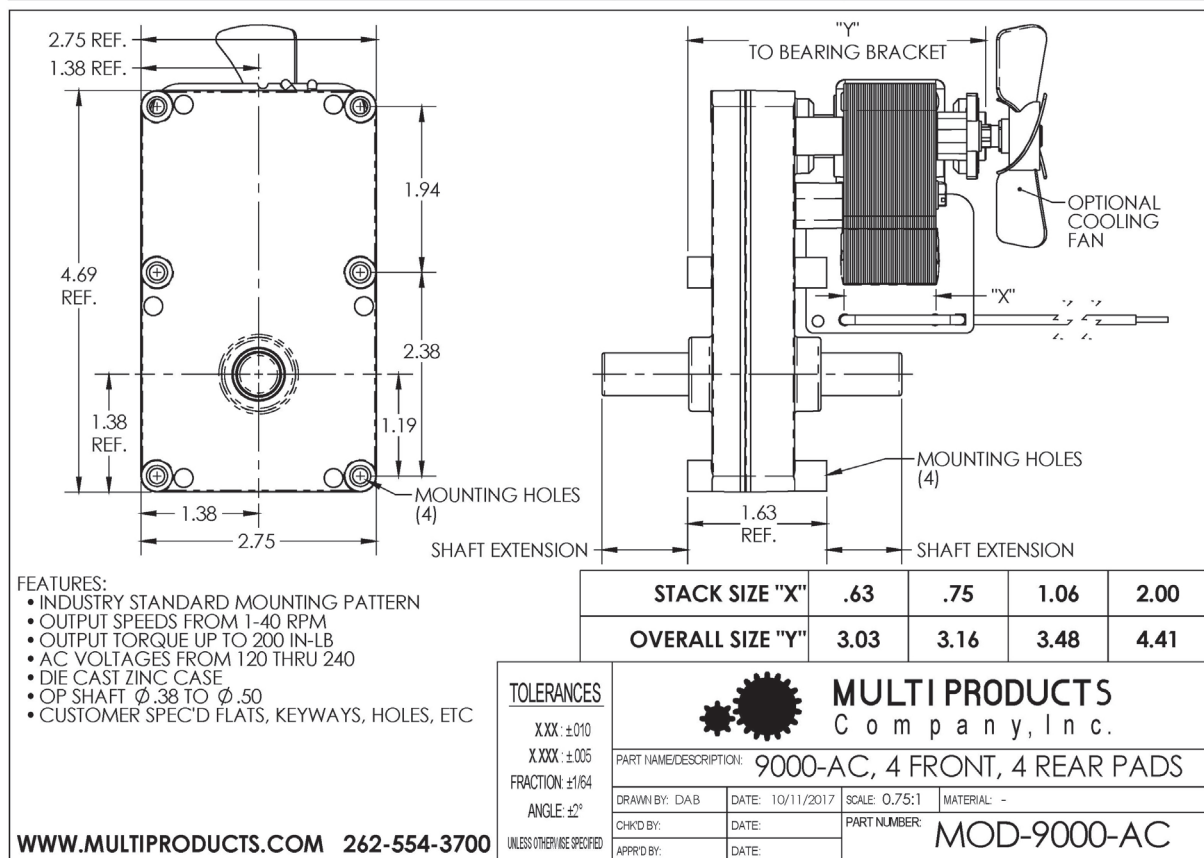
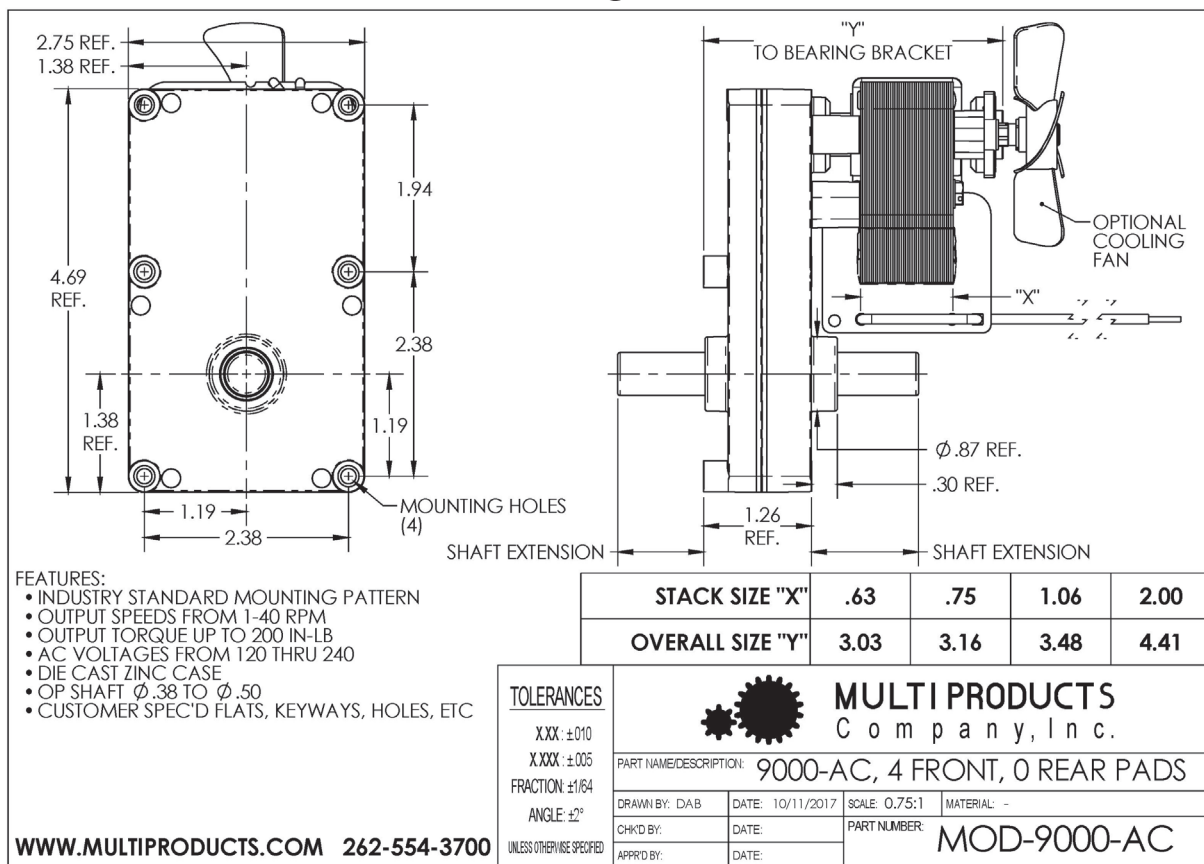


AC Gearmotor Drawing





AC Gearmotor Drawing





AC Gearmotor Drawing

