



8000 Series Gearbox

Light Duty - Most Compact



Gearbox Specifications

The 8000 Series "D" is the smallest gearbox we offer, with an industry standard mounting option for the ability to easily retrofit into existing light duty food service, gaming, and vending applications. Able to handle a continuous torque rating up to 50 in-lb. Output shaft diameters range from 1/4" through 3/8" with flats, keyways, threads, or square ends. Other options: multiple gearing materials, needle or ball bearings, and custom wiring harnesses.



Applications: Foodservice Equipment, Industrial Machinery, Gaming, Fluid Control, and Vending Machines

Features:

- Zinc die-cast housing
- Permanently lubricated with synthetic gear grease
- Sealed ball bearings optional
- Noise-reducing nylon high-speed gearing
- Industry standard mountings



8000 DC GEARMOTOR

Information and Specifications

Compatible DC Motor Options



DC Model	315	615	12Y & 18Y
Voltage	12 / 24V	12 / 24V	12 / 24V
Speed	2900-5740 RPM	1450-5745 RPM	2685-5570 RPM
Torque	0.5-1.1 oz-in.	1.4-2.5 oz-in.	1.0 -1.8 oz-in.
Power	—	—	1.5 - 10.1 W
Frame Size	28mm	36mm	32mm
Reversible	Yes	Yes	Yes
Motor Life*	1000+ Hours	1000+ Hours	3000+ Hours

*Estimated life - brush life dependent on duty cycle, application, and environment.

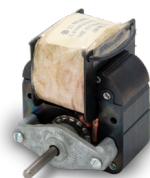
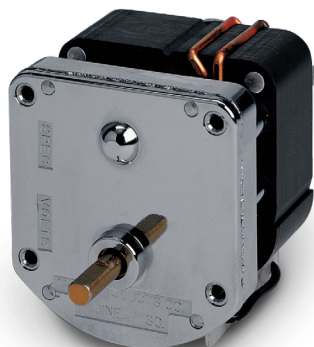
DC Gearmotor Performance Specifications

DC Motor	Voltage	Rated Torque	Rated Speed	Rotation	Shaft Size
315, 12Y, & 18Y - Small Frame	12 / 24V	0.5 - 35 in-lbs.	8 - 200 RPM	Reversible	1/4" to 3/8"
615 - Medium Frame	12 / 24V	3 - 50 in-lbs.	8 - 200 RPM	Reversible	1/4" to 3/8"

8000 AC GEARMOTOR

Information & Specifications

Compatible AC Motor Options



AC Motor	Shaded Pole
Voltage	24 - 480 V
Frequency	50 / 60 Hz
Rated Speed	3000 RPM
Rated Torque	Up to 11 in-oz
Rotation	Uni-directional

AC Gearmotor Performance Specifications

Core Stack Size	Voltage	Rated Torque	Rated Speed	Rotation	Shaft Size
0.625"	120 - 240 VAC	0.7 - 48 in-lbs.	8 - 200 RPM	Uni-directional	1/4", 5/16, or 3/8"
0.75"	120 - 240 VAC	1.0 - 50 in-lbs.	8 - 200 RPM	Uni-directional	1/4", 5/16, or 3/8"
1.0625"	120 - 240 VAC	1.4 - 50 in-lbs.	8 - 200 RPM	Uni-directional	1/4", 5/16, or 3/8"
2.00"	120 - 240 VAC	2.1 - 50 in-lbs.	8 - 200 RPM	Uni-directional	1/4", 5/16, or 3/8"

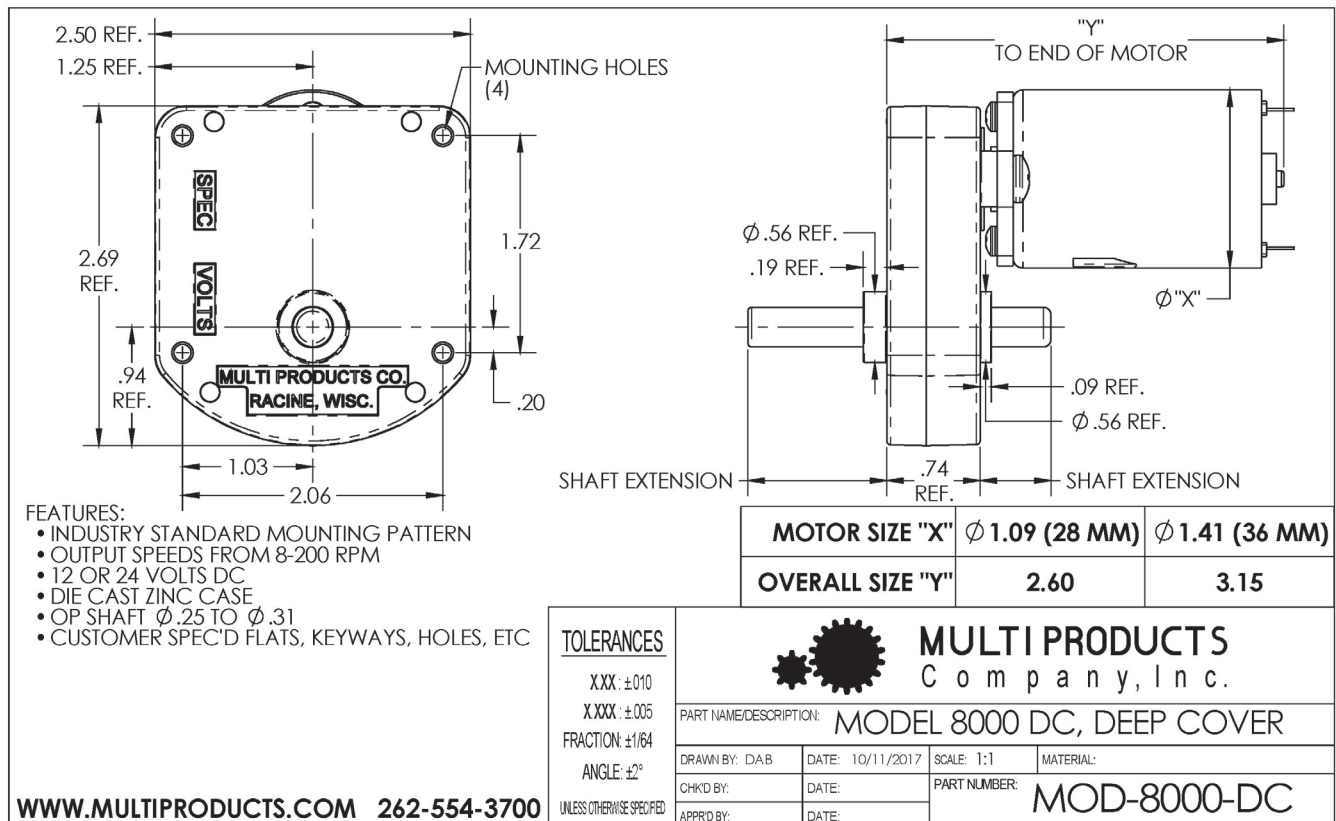
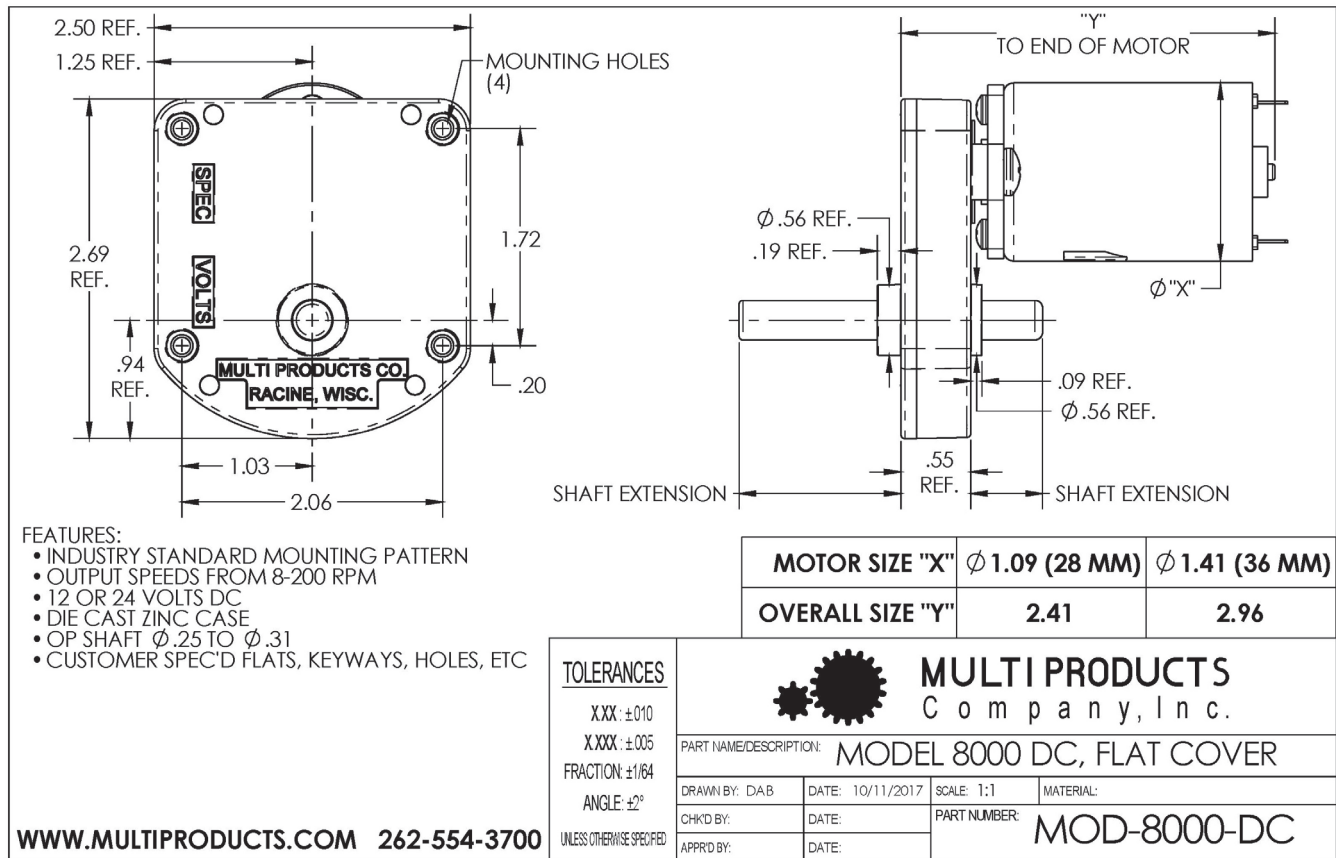


Outline Drawings

DC and AC Motor Outline Drawings

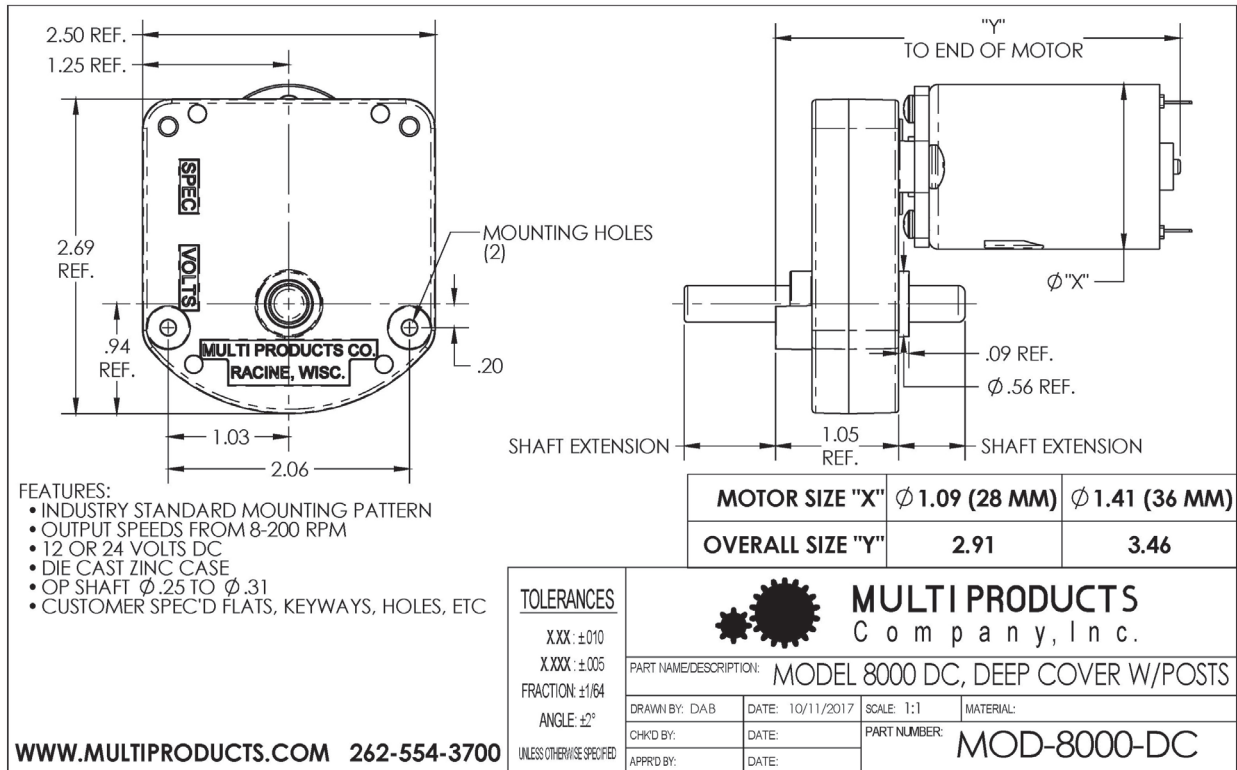


DC Gearmotor Drawings

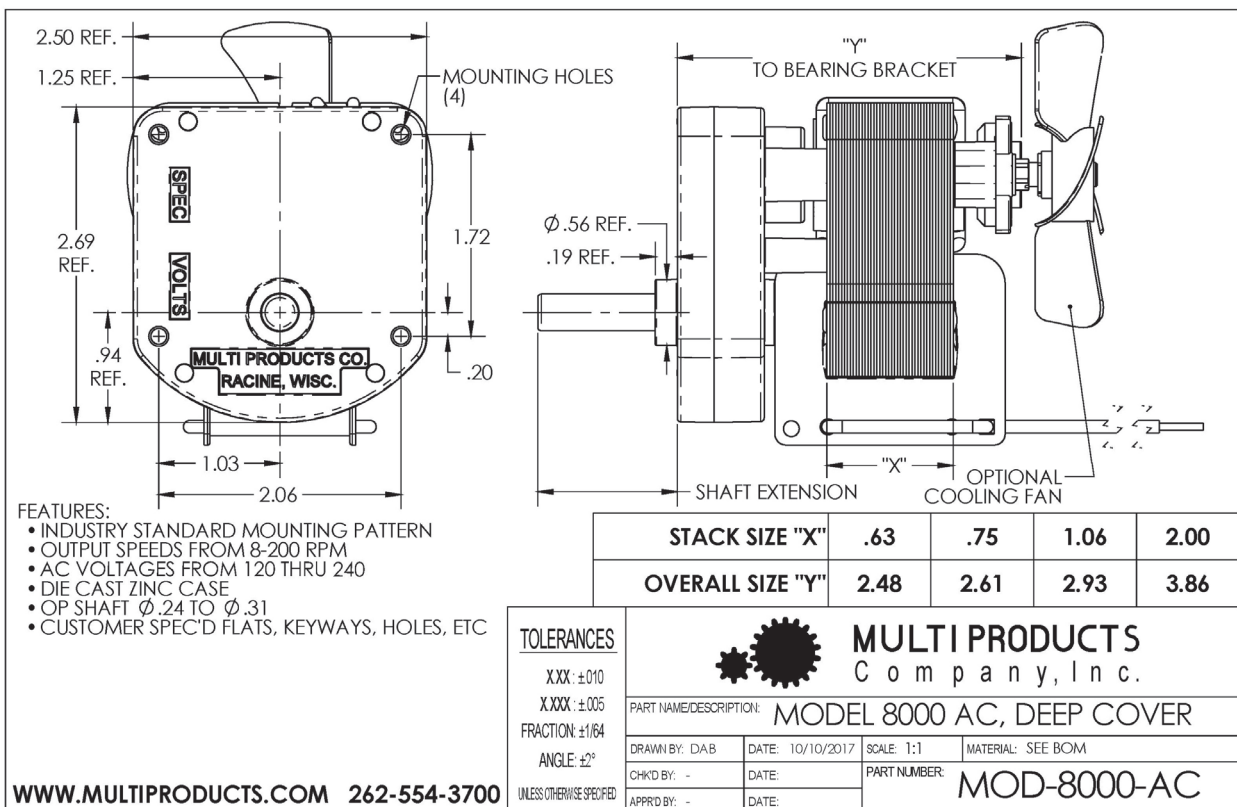




DC Gearmotor Drawings



AC Gearmotor Drawing





AC Gearmotor Drawing

