



7000x Series Gearbox

Medium Duty - Offset Shaft



Gearbox Specifications

The 7000x Series "Square" features the same variety of industry standard mounting options as the 7000 series but with an offset output shaft allowing for greater gearing reduction and lower output speeds. Able to handle a continuous torque rating up to 75 in-lb. Output shaft diameters range from 1/4" through 3/8" with flats, keyways, threads, or square ends. Other options: multiple gearing materials, needle or ball bearings, and custom wiring harnesses.



Applications: Foodservice Equipment, Agriculture, Industrial Machinery, Sporting Goods, Gaming and Amusement, and Pharmaceutical/Healthcare

Features:

- Zinc die-cast housing
- Various industry standard mounting options
- Permanently lubricated with synthetic gear grease
- AC Motors - Pawl or cone brake options
- Noise-reducing phenolic high-speed gearing



7000X DC GEARMOTOR

Information and Specifications

Compatible DC Motor Options



7000x w/ 28Y Precision Motor

7000x w/ Brushless Motor

DC Model	315	615	12Y & 18Y	28Y	Brushless
Voltage	12 / 24V	12 / 24V	12 / 24V	12 / 24V	24V
Speed	2900-5740 RPM	1450-5745 RPM	2685-5570 RPM	2538-5615 RPM	4172 RPM
Torque	0.5-1.1 oz-in.	1.4-2.5 oz-in.	1.0 -1.8 oz-in.	2.6-4.0 oz-in.	10.0 oz-in.
Power	—	—	1.5 - 10.1 W	4.8-16.3W	30.8W
Frame Size	28mm	36mm	32mm	40mm	42mm
Reversible	Yes	Yes	Yes	Yes	Yes
Motor Life*	1000+ Hours	1000+ Hours	3000+ Hours	3000+ Hours	20000+ Hours

*Estimated life - brush life dependent on duty cycle, application, and environment.

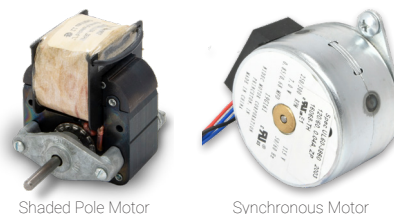
DC Gearmotor Performance Specifications

DC Motor	Voltage	Rated Torque	Rated Speed	Rotation	Shaft Size
315, 12Y, & 18Y	12 / 24V	0.5 - 73 in-lbs.	4 - 200 RPM	Reversible	1/4" to 3/8"
615 - Medium Frame	12 / 24V	3 - 75 in-lbs.	4 - 200 RPM	Reversible	1/4" to 3/8"
28Y - Medium Frame	12 / 24V	4 - 75 in-lbs.	4 - 150 RPM	Reversible	1/4" to 3/8"

7000X AC GEARMOTOR

Information & Specifications

Compatible AC Motor Options



Shaded Pole Motor

Synchronous Motor

AC Motor	Shaded Pole	Synchronous
Voltage	24 - 480 V	120/230/240 V
Frequency	50 / 60 Hz	50 / 60 Hz
Rated Speed	3000 RPM	250 / 300 RPM
Rated Torque	Up to 11 in-oz	8.5 oz-in.
Rotation	Uni-directional	Reversible

Shaded Pole AC Gearmotor Performance Specifications

Core Stack Size	Voltage	Rated Torque	Rated Speed	Rotation	Shaft Size
0.625"	120 - 240 VAC	0.7 - 48 in-lbs.	1 - 200 RPM	Uni-directional	1/4", 5/16, or 3/8"
0.75"	120 - 240 VAC	1.0 - 75 in-lbs.	1 - 200 RPM	Uni-directional	1/4", 5/16, or 3/8"
1.0625"	120 - 240 VAC	1.4 - 75 in-lbs.	1 - 200 RPM	Uni-directional	1/4", 5/16, or 3/8"
2.00"	120 - 240 VAC	2.1 - 75 in-lbs.	1 - 200 RPM	Uni-directional	1/4", 5/16, or 3/8"

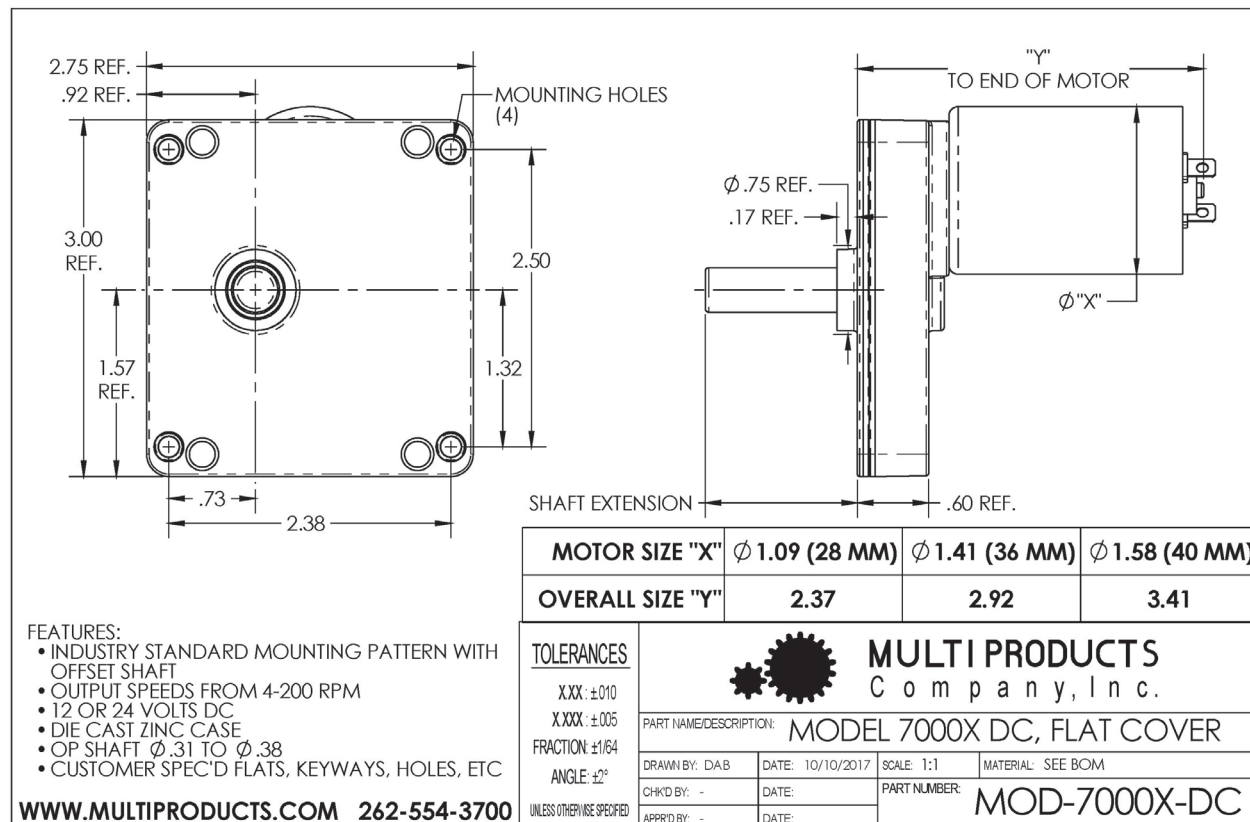
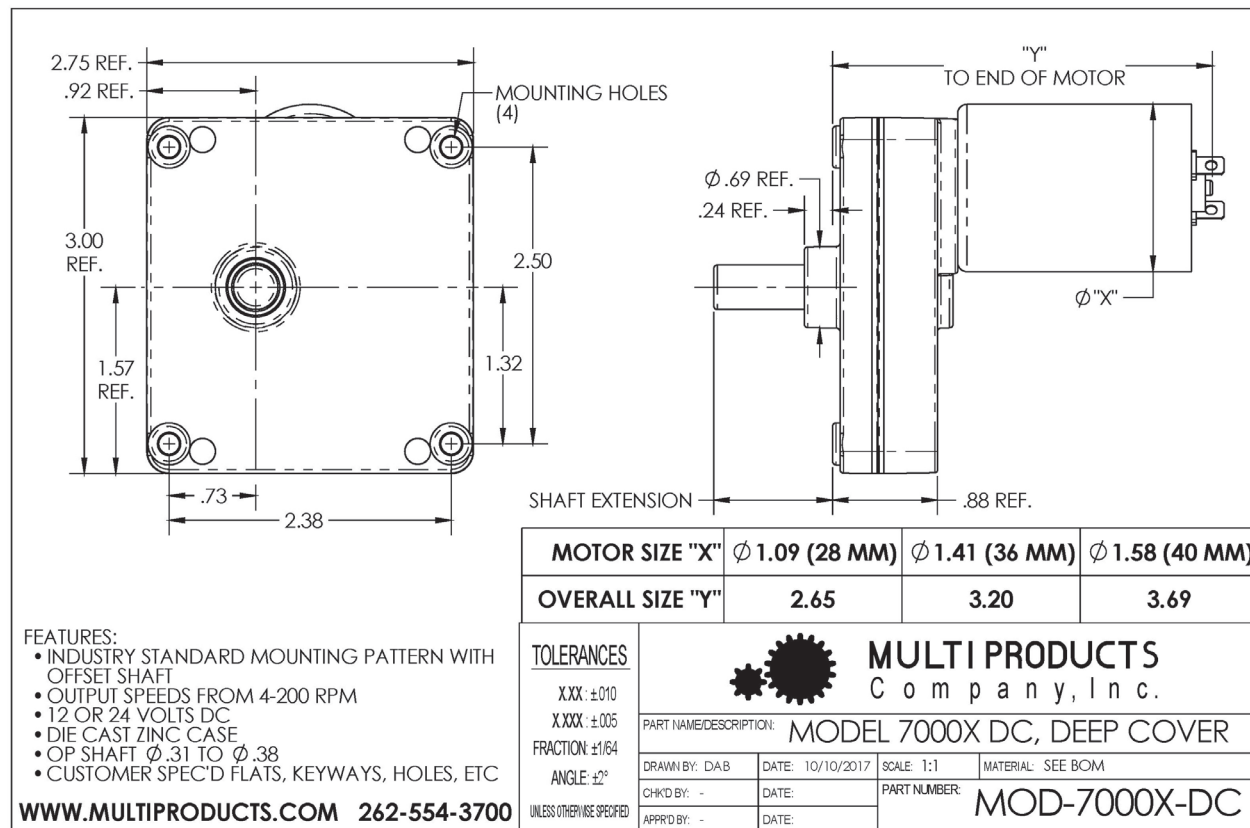


Outline Drawings

DC and AC Motor Outline Drawings

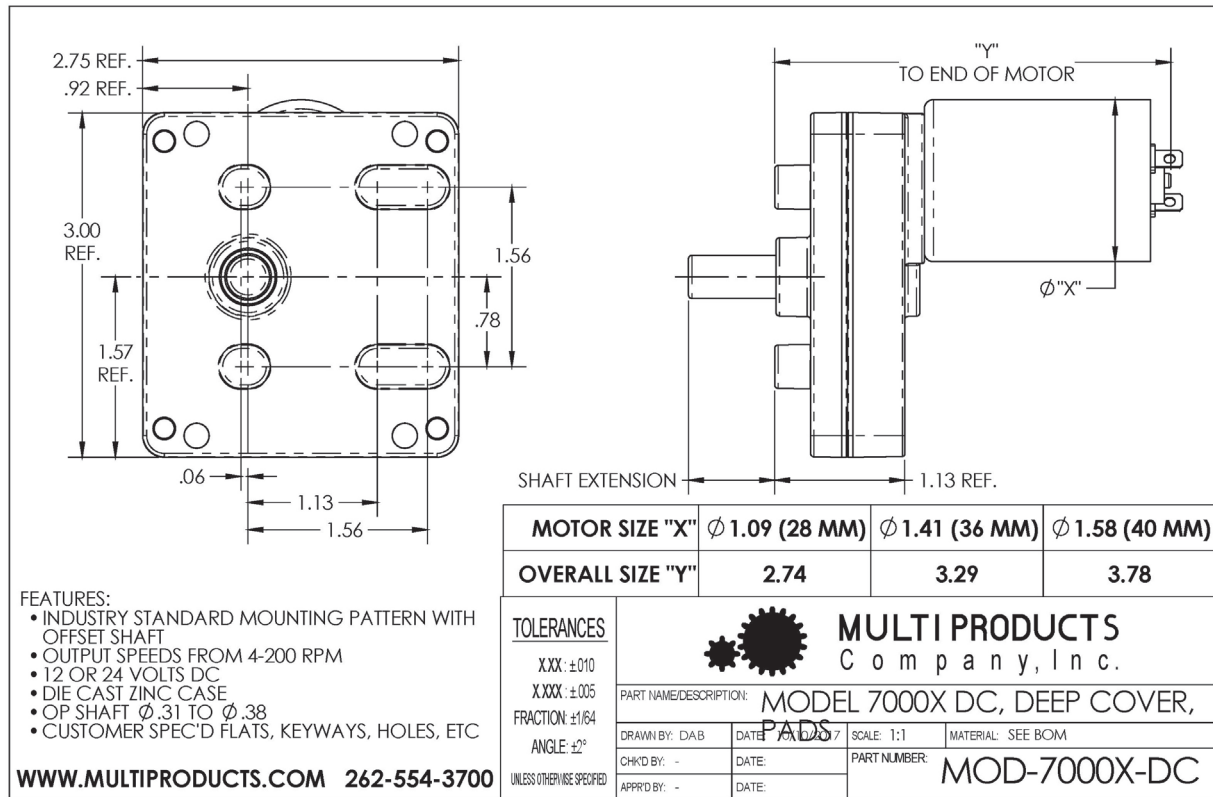


DC Gearmotor Drawing

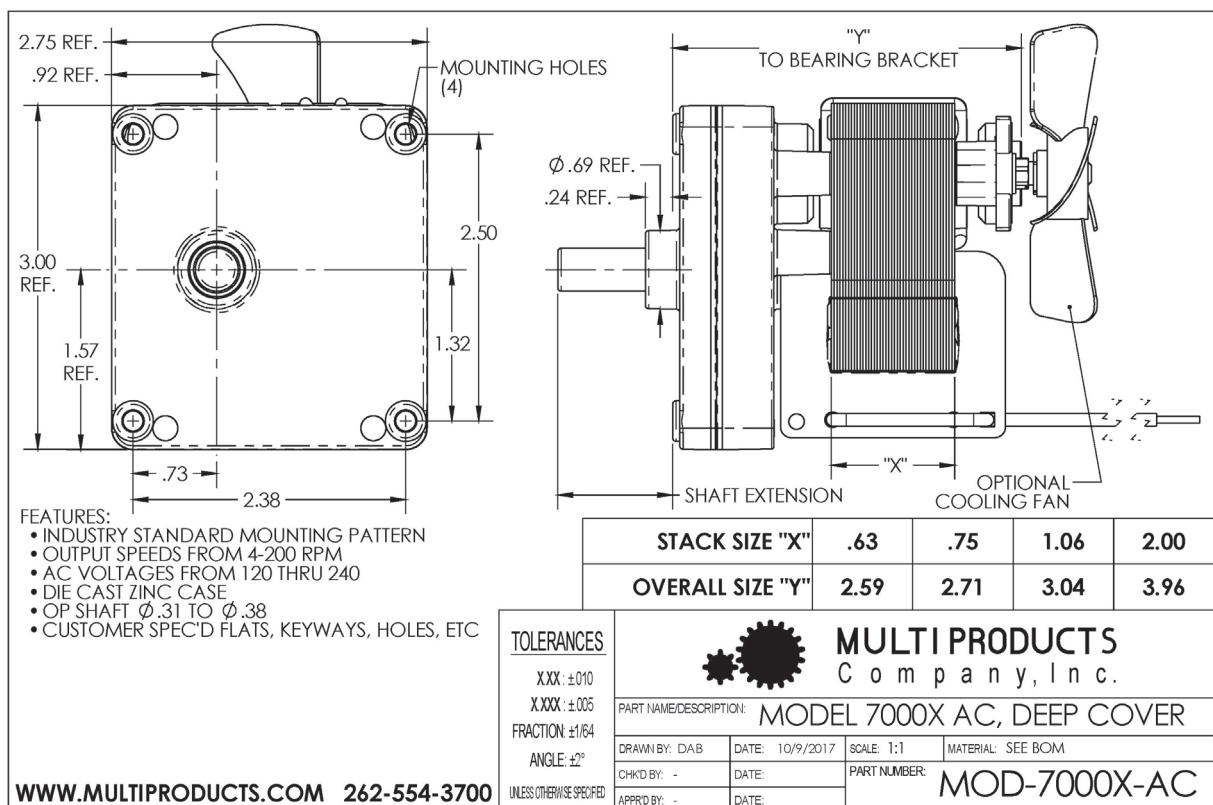




DC Gearmotor Drawing



AC Gearmotor Drawing





AC Gearmotor Drawing

