



# 6000 Series Gearbox

Medium Duty - Retrofit Option



## Gearbox Specifications

The 6000 Series offers industry standard mountings on both sides of the housing. Able to handle a continuous torque rating up to 75 in-lb. Low speed output of 8- 25 RPM. Output shaft diameters range from 1/4" through 3/8" with dual outputs, flats, keyways, threads, or square ends to meet your application needs. Other options: multiple gearing materials, needle or ball bearings, and custom wiring harnesses.



**Applications:** Foodservice Equipment, Agriculture, Industrial Machinery, and Sporting Goods

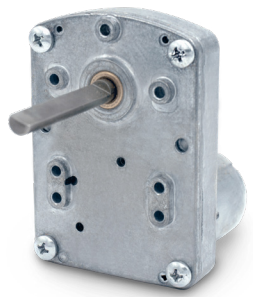
### Features:

- Zinc die-cast housing
- Industry standard mounting options
- Permanently lubricated with synthetic gear grease
- AC Motors - Pawl or cone brake options
- Noise-reducing phenolic high-speed gearing

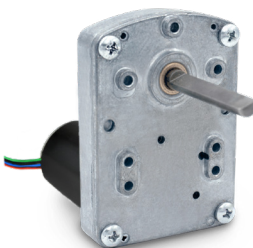


### 6000 DC GEARMOTOR

### Information and Specifications

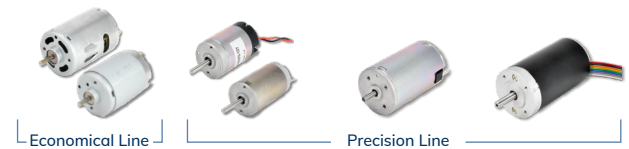


6000 w/ 615 Economical Motor



6000 w/ Brushless Motor

### Compatible DC Motor Options



DC Model	615	12Y & 18Y	28Y	Brushless
Voltage	12 / 24V	12 / 24V	12 / 24V	24V
Speed	1450-5745 RPM	2685-5570 RPM	2538-5615 RPM	4172 RPM
Torque	1.4-2.5 oz-in.	1.0 -1.8 oz-in.	2.6-4.0 oz-in.	10.0 oz-in.
Power	—	1.5 - 10.1 W	4.8-16.3W	30.8W
Frame Size	36mm	32mm	40mm	42mm
Reversible	Yes	Yes	Yes	Yes
Motor Life*	1000+ Hours	3000+ Hours	3000+ Hours	20000+ Hours

\*Estimated life - brush life dependent on duty cycle, application, and environment.

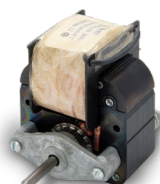
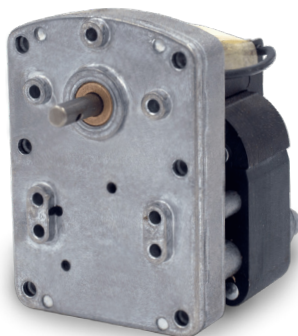
### DC Gearmotor Performance Specifications

DC Motor	Voltage	Rated Torque	Rated Speed	Rotation	Shaft Size
12Y, & 18Y	12 / 24V	9 - 35 in-lbs.	8 - 25 RPM	Reversible	1/4" to 3/8"
615 - Medium Frame	12 / 24V	9.5 - 75 in-lbs.	8 - 25 RPM	Reversible	1/4" to 3/8"
28Y - Medium Frame	12 / 24V	11 - 75 in-lbs.	8 - 25 RPM	Reversible	1/4" to 3/8"

### 6000 AC GEARMOTOR

### Information & Specifications

### Compatible AC Motor Options



Shaded Pole Motor



Synchronous Motor

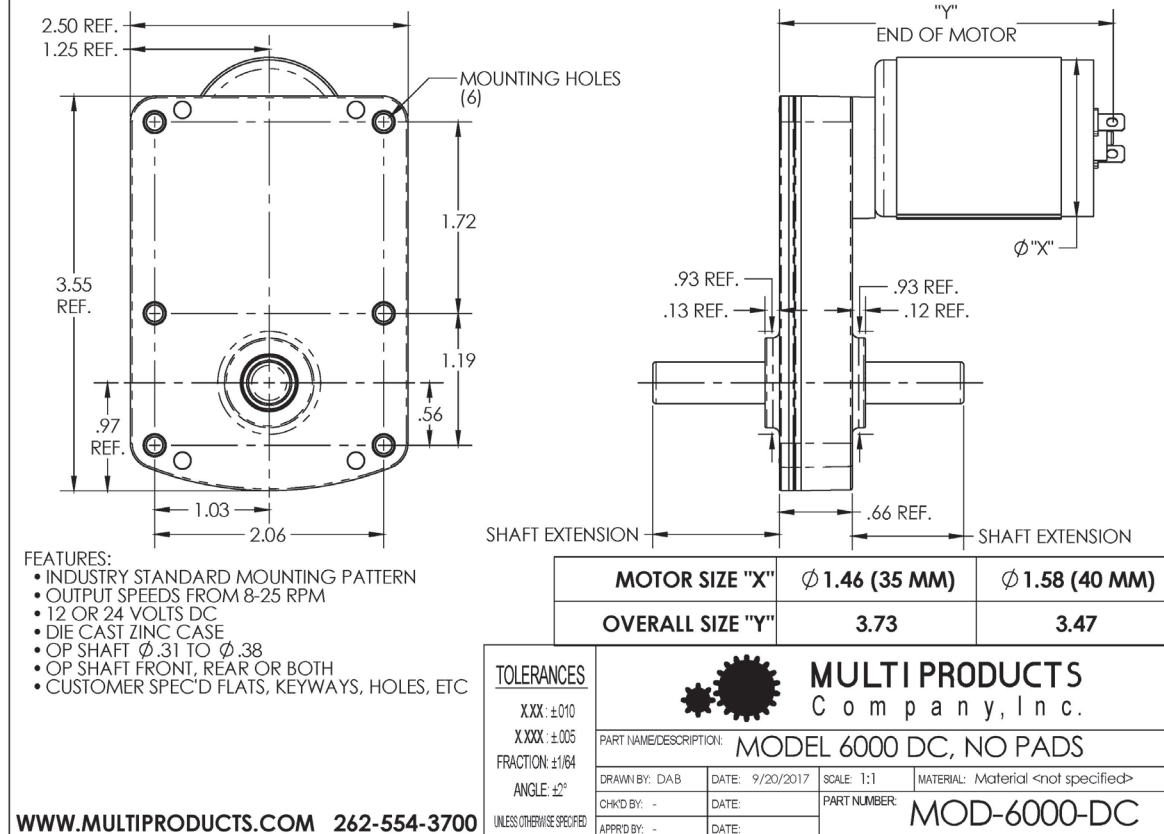
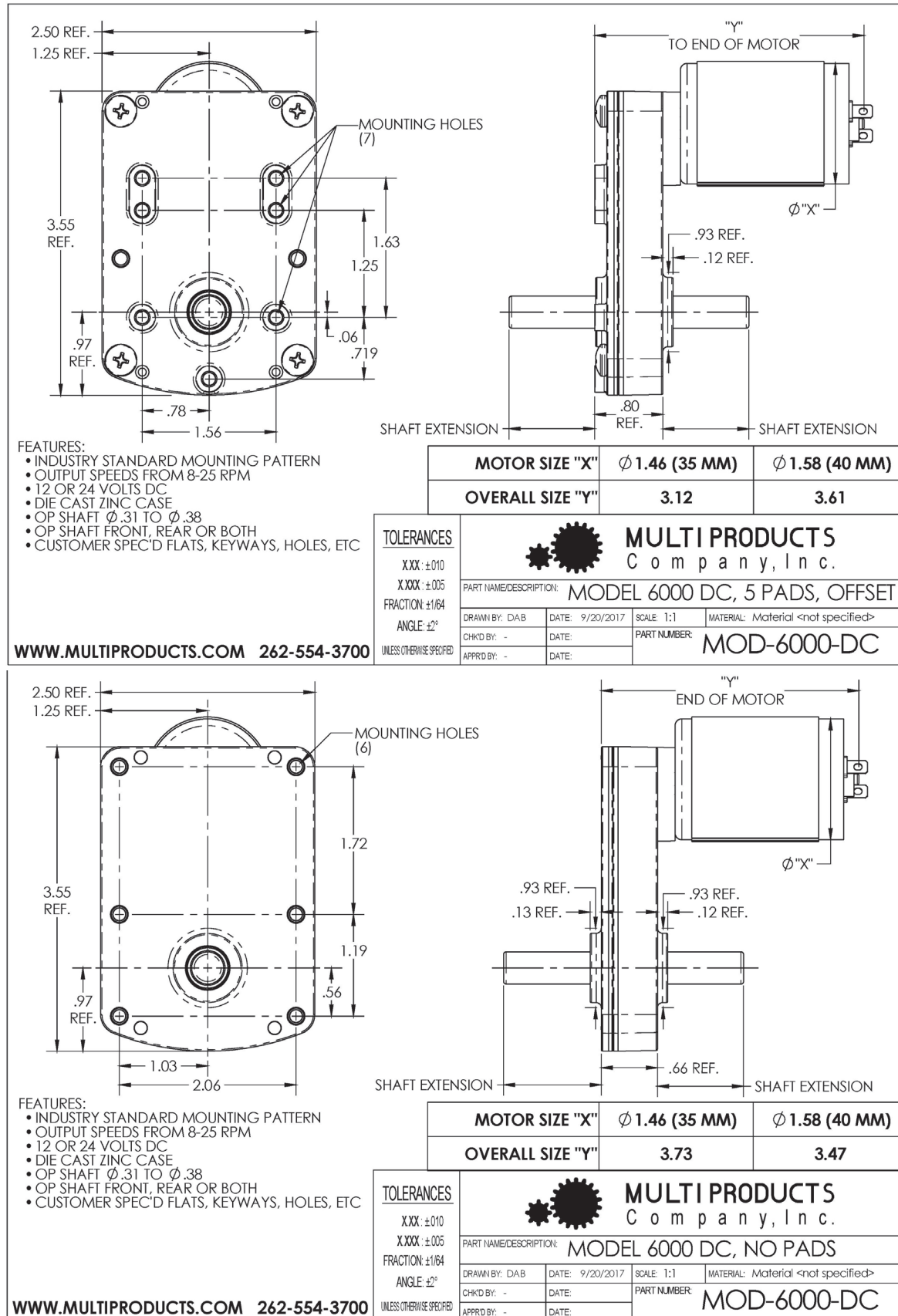
AC Motor	Shaded Pole	Synchronous
Voltage	24 - 480 V	220/230/240 V
Frequency	50 / 60 Hz	50 / 60 Hz
Rated Speed	3000 RPM	250 / 300 RPM
Rated Torque	Up to 11 in-oz	8.5 oz-in.
Rotation	Uni-directional	Reversible

### Shaded Pole AC Gearmotor Performance Specifications

Core Stack Size	Voltage	Rated Torque	Rated Speed	Rotation	Shaft Size
0.625"	120 - 240 VAC	5.5 - 24 in-lbs.	8 - 25 RPM	Uni-directional	1/4", 5/16, or 3/8"
0.75"	120 - 240 VAC	8 - 41 in-lbs.	8 - 25 RPM	Uni-directional	1/4", 5/16, or 3/8"
1.0625"	120 - 240 VAC	11 - 75 in-lbs.	8 - 25 RPM	Uni-directional	1/4", 5/16, or 3/8"
2.00"	120 - 240 VAC	17 - 75 in-lbs.	8 - 25 RPM	Uni-directional	1/4", 5/16, or 3/8"



## DC Gearmotor Drawing



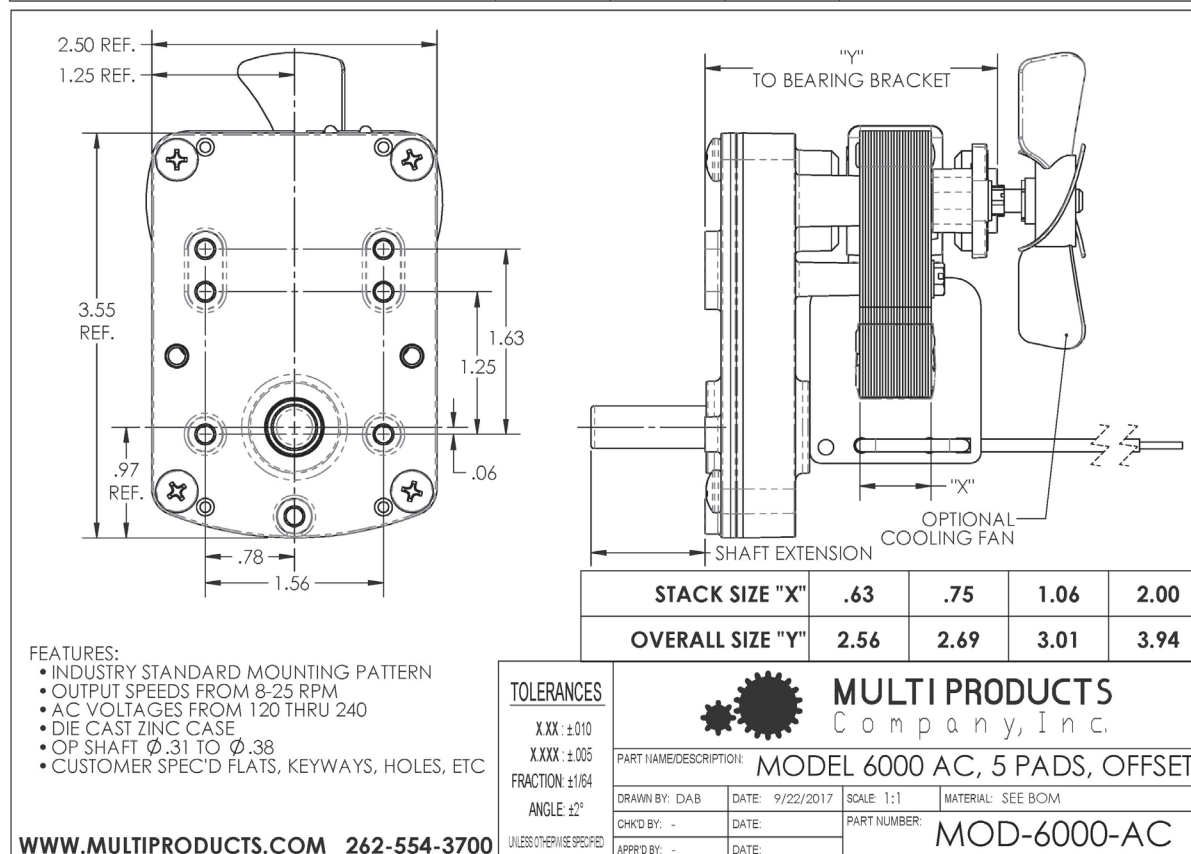
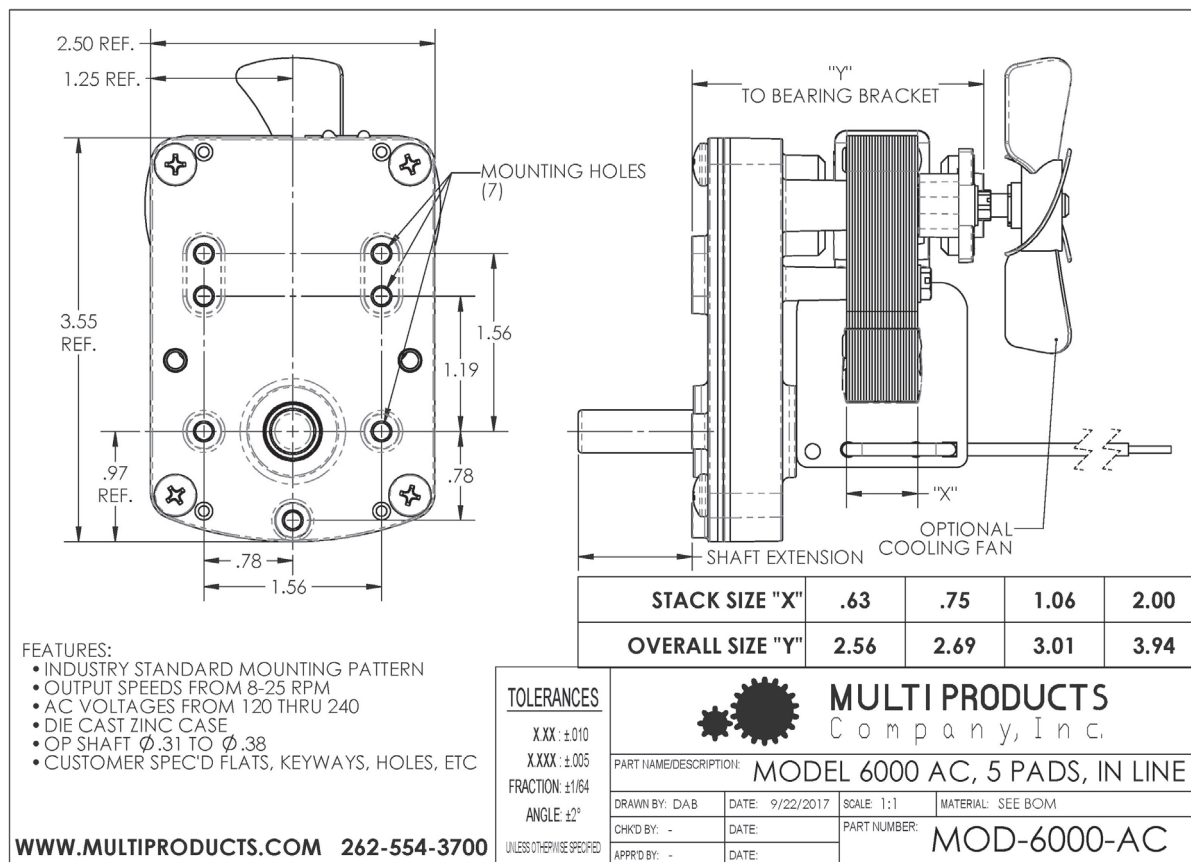


# Outline Drawings

DC and AC Motor Outline Drawings



## AC Gearmotor Drawing





## AC Gearmotor Drawing

