



# 302 Series Gearbox

Heavy Duty - Compact Package



## Gearbox Specifications

The heavy-duty 302 Series "Star" shaped gearbox offers a compact footprint for when surface area is at a premium. The 302 gearcase can handle a continuous torque rating up to 150 in-lb. Constructed with a zinc die-cast, gasket sealed housing for dust and moisture resistance. Output shaft diameters range from 1/4" through 3/8" with flats, keyways, threads, or square ends to meet your application needs. Other options: multiple gearing materials, needle or ball bearings, and custom wiring harnesses.



**Applications:** Foodservice Equipment, Agriculture, Industrial Machinery, Gaming, Sporting Goods, and Fluid Control.

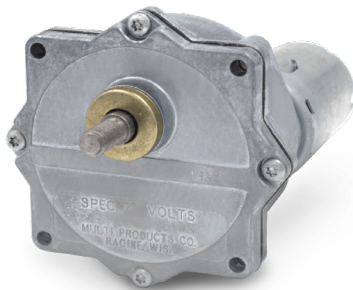
### Features:

- Zinc die-cast housing
- Gasketed enclosure for environmental protection
- Permanently lubricated with synthetic gear grease
- Sealed ball bearings optional
- Noise-reducing phenolic high-speed gearing



### 302 DC GEARMOTOR

### Information and Specifications



302 w/ 615 Economical Motor



302 w/ Brushless Motor

### Compatible DC Motor Options



DC Model	615	983	28Y	30Y & 55Y	Brushless
Voltage	12 / 24V	12 / 24V	12 / 24V	12 / 24V	24V
Speed	1450-5745 RPM	3100-4800 RPM	2538-5615 RPM	1275-4700 RPM	4172 RPM
Torque	1.4-2.5 oz-in.	20-40 oz-in.	2.6-4.0 oz-in.	6.5-18.1 oz-in.	10.0 oz-in.
Power	—	—	4.8-16.3W	3.9-55.2W	30.8W
Frame Size	36mm	52mm	40mm	54mm	42mm
Reversible	Yes	Yes	Yes	Yes	Yes
Motor Life*	1000+ Hours	1000+ Hours	3000+ Hours	3000+ Hours	20000+ Hours

\*Estimated life - brush life dependent on duty cycle, application, and environment.

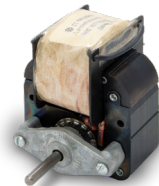
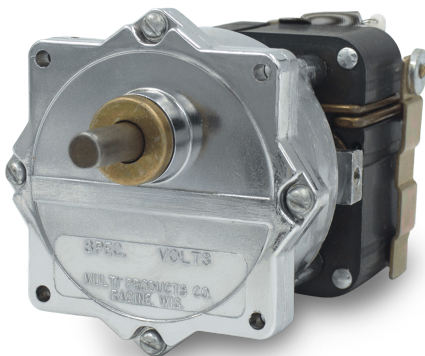
### DC Gearmotor Performance Specifications

DC Motor	Voltage	Rated Torque	Rated Speed	Rotation	Shaft Size
615 - Medium Frame	12 / 24V	2 - 90 in-lbs.	4 - 400 RPM	Reversible	1/4" to 3/8"
28Y - Medium Frame	12 / 24V	4 - 100 in-lbs.	4 - 150 RPM	Reversible	1/4" to 3/8"
55Y & 983 Large Frame	12 / 24V	5.5 - 150 in-lbs.	10 - 400 RPM	Reversible	1/4" to 3/8"

### 302 AC GEARMOTOR

### Information & Specifications

### Compatible AC Motor Options



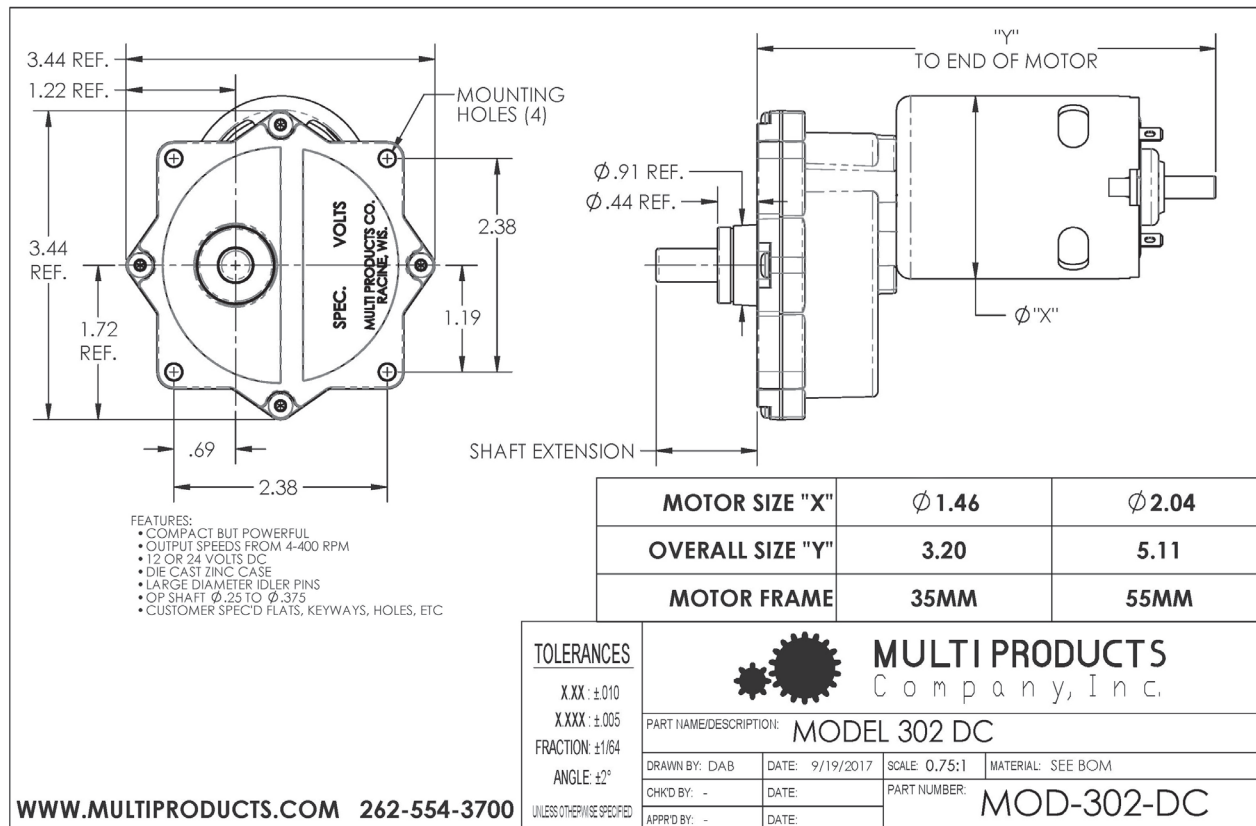
AC Motor	Shaded Pole
Voltage	24 - 480 V
Frequency	50 / 60 Hz
Rated Speed	3000 RPM
Rated Torque	Up to 11 in-oz
Rotation	Uni-directional

### AC Gearmotor Performance Specifications

Core Stack Size	Voltage	Rated Torque	Rated Speed	Rotation	Shaft Size
0.625"	120 - 240 VAC	0.5 - 48 in-lbs.	4 - 400 RPM	Uni-directional	1/4", 5/16, or 3/8"
1.00"	120 - 240 VAC	0.7 - 81 in-lbs.	4 - 400 RPM	Uni-directional	1/4", 5/16, or 3/8"
1.25"	120 - 240 VAC	1.1 - 150 in-lbs.	4 - 400 RPM	Uni-directional	1/4", 5/16, or 3/8"
2.00"	120 - 240 VAC	1.5 - 150 in-lbs.	4 - 400 RPM	Uni-directional	1/4", 5/16, or 3/8"



## DC Gearmotor Drawing



## AC Gearmotor Drawing

