

PART# WILL BE LOCATED HERE

SHAFT TYPE "A"

TYPICAL PERFORMANCE
 SPEED: 2.0 R.P.M @ 60HZ
 60 IN-LBS CLASS H INSULATION-UL14 VERSION
 30 IN-LBS CLASS H INSULATION-UL6, UL12 VERSION

L1 WHITE
 L2 BLACK
 WIRING-"BW"

NOTE: ALL DIMENSIONS ARE FOR REFERENCE ONLY.

PAGE 1 OF 2



MULTI PRODUCTS
 C o m p a n y , I n c .

PART NAME/DESCRIPTION: TORQUEBOX-OUTLINE

DRAWN BY: PJ DATE: 3-27-06

CHK'D BY: DATE:

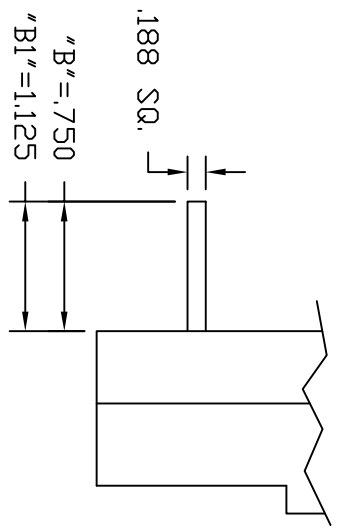
APPR'D BY: DATE:

SCALE: 1/2 MATERIAL:

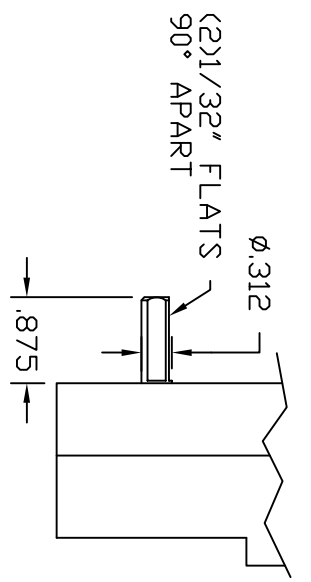
PART NUMBER:

TB-VARIOUS

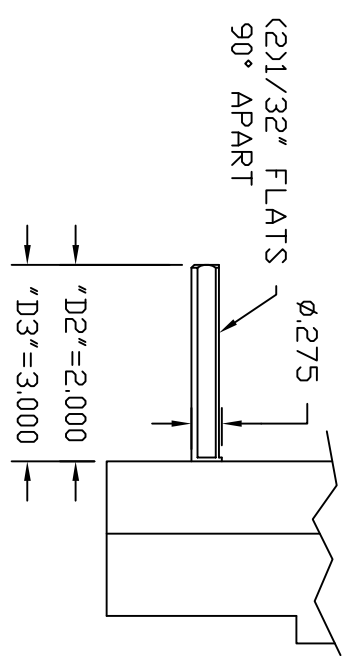
REV	REVISION	DATE	ECO#



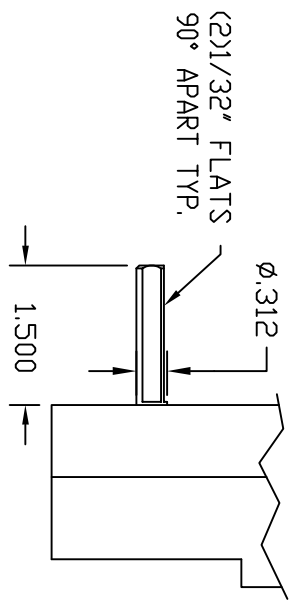
SHAFT TYPE "B"



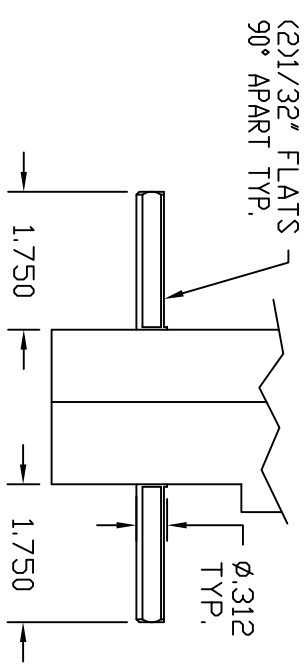
SHAFT TYPE "C"



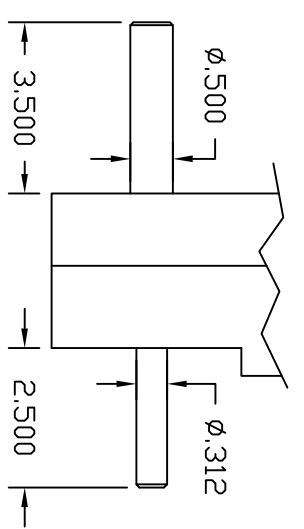
SHAFT TYPE "D"



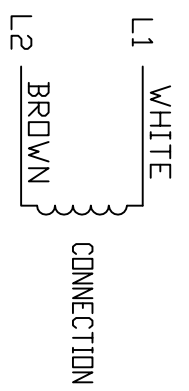
SHAFT TYPE "E"



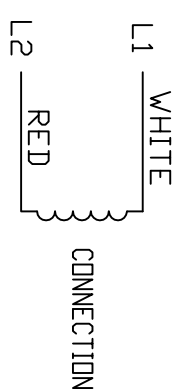
SHAFT TYPE "F"



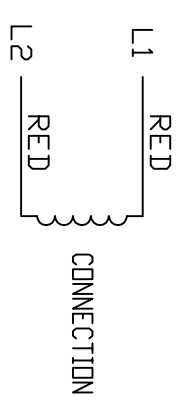
SHAFT TYPE "G"



WIRING-"BRW"



WIRING-"RW"



WIRING-"RR"



MULTI PRODUCTS
C o m p a n y, I n c.

TORQUEBOX-OUTLINE

PART NAME/DESCRIPTION

DRAWN BY: PJ DATE: 3-27-06

CHK'D BY: DATE:

APPR'D BY: DATE:

SCALE: 1/2 MATERIAL:

PART NUMBER:

TB-VARIOUS

REV	REVISION	DATE	ECO#