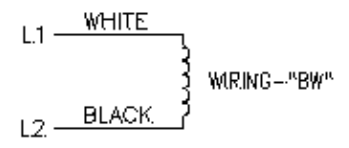



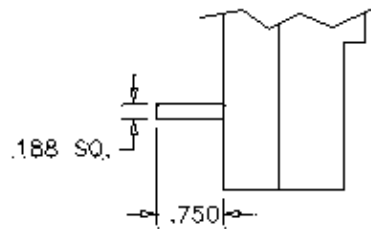
TYPICAL PERFORMANCE
 SPEED: 1.8 R.P.M @ 60Hz
 60 IN-LBS CLASS H INSULATION-UL14 VERSION
 30 IN-LBS CLASS H INSULATION-UL6, UL12 VERSION



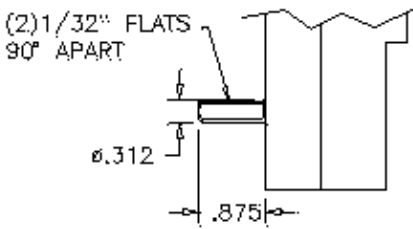
PAGE 1 OF 2

NOTE: ALL DIMENSIONS ARE FOR REFERENCE ONLY.

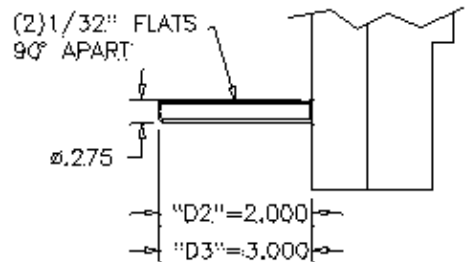
				 MULTI PRODUCTS Company, Inc.			
				PART NAME/DESCRIPTION: TORQUEBOX-OUTLINE			
DRAWN BY: PJ		DATE: 3-27-06		SCALE: 1/2		MATERIAL:	
CHK'D BY:		DATE:		PART NUMBER:		TB-VARIOUS	
APPR'D BY:		DATE:					
REV	REVISION	DATE	ECO#				



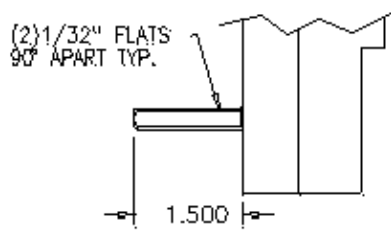
SHAFT TYPE "B"



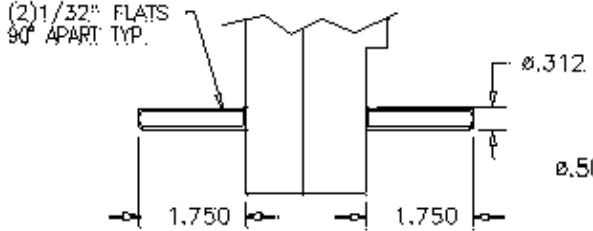
SHAFT TYPE "C"



SHAFT TYPE "D"



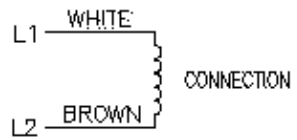
SHAFT TYPE "E"



SHAFT TYPE "F"



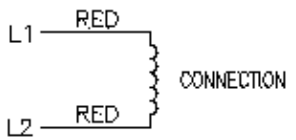
SHAFT TYPE "G"



WIRING—"BRW"



WIRING—"RW"



WIRING—"RR"



MULTI PRODUCTS
Company, Inc.

PART NAME/DESCRIPTION: TORQUEBOX-OUTLINE			
DRAWN BY: PJ	DATE: 3-27-06	SCALE: 1/2	MATERIAL:
CHK'D BY:	DATE:	PART NUMBER:	TB-VARIOUS
APPR'D BY:	DATE:		

REV	REVISION	DATE	ECO#